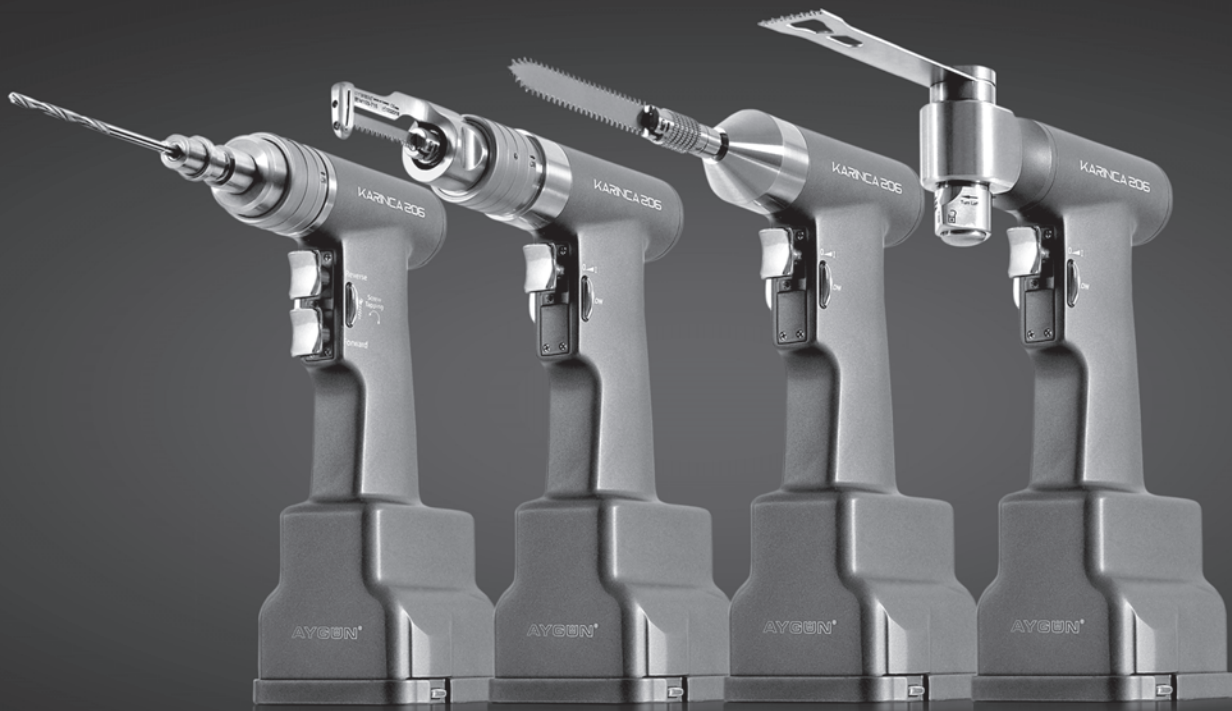


KARINCA 206

Surgical Motor Systems

Battery Operated



"Meeting point for surgery..."

AYGUN®
SURGICAL INSTRUMENTS CO., INC.



“ Meeting point for surgery...”

Aygün has the right to modify and develop the products declared in this catalogue and its production program.

The weight and dimensional information given in our catalog are approximate values.

KA-5015-Y4 Copyright ©
Aygün Co., Inc 2019 All Right
Reserved, Printed in Türkiye

www.aygun.com

OUR HISTORY

AYGÜN, one of the leading establishments of Turkey in the field of Medical Industry, was founded in 1988. It manufactures Container Systems for sterilization, Surgical Motor Systems, Medical Illumination Systems and Single Use Medical Systems in its facility at Samsun Central Organized Industrial Zone.

AYGÜN meets the needs of significant part of Turkey as a result of its continuous R&D works and the capacity increasing. It manufactures its products in international standards and put them to the world market with a high competitive power. Moreover with its integrated quality management system, it proves that it is a specialized establishment.

Besides being a manufacturer, AYGÜN is also a designer company and with its continuous product development works it increases number of its patents, on the other hand, is contributing career development of rising generation by acting as a school.





STERILIZATION CONTAINER SYSTEMS

All AYGÜN sterilization container systems are designed for perfect steam penetration, traceability, safety and stability. The locking mechanisms secure excellent grip and ensure up and down movement of the lids under steam pressure during the sterilization. We service our bottoms and lids made of 2 mm high quality special alloy aluminum raw material to the whole world with 8 basic color options.

CONTAINER MODELS

STANDARD MODEL
BIO-BARRIER MODEL
PPSU MODEL
WINDOW MODEL
B3 MODEL
PLASMA MODEL
A1 MODEL
SAFE MODEL

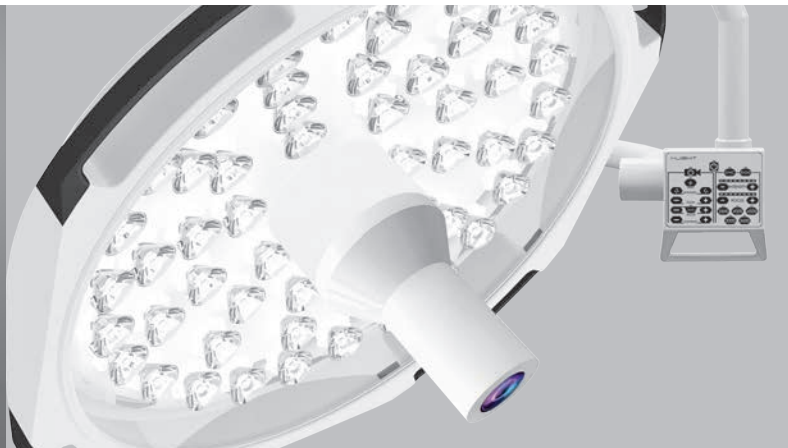


SURGICAL MOTOR SYSTEMS

The expertise of AYGÜN in surgical motor systems gathered up many designs and systems that have special structures servicing from neuro and spinal surgery to many fields like cardiovascular, orthopedic, plastic, hand & foot and maxillofacial surgery. The quality, power and ergonomic design of the new generation of high-tech battery powered surgical motor systems once again demonstrates AYGÜN's expertise in the medical field.

SURGICAL MOTOR SYSTEM MODELS

KARINCA 206
KARINCA 208
DERMATOME BES
DERMATOME ST-5
SKIN GRAFT MESHER
PRAXIS 3
PRAXIS 3B
Sternal Saw 3B
HSM Micro System
HSM 2 Neuro & Spine System
Mini Bone 40.000 rpm
Mini Bone Monoblock
Arthroscopy Shaver
Mini Surgical Motor
Mini Compact
Neuro Air Power
Standard Macro
EPS Motor System
Macro Compact
Mobil Stator



SURGICAL ILLUMINATION SYSTEMS

AYGÜN is furthering a number of R&D projects simultaneously thanks to its advanced R&D infrastructure, team of engineers and technical personnel specialized in their field. Thus, the company holds tens of patents and models actively used in the medical sector.

ILLUMINATION SYSTEMS FEATURES

I-LIGHT LD Specifications
Superior Optical performance
Light beams configuration to provide shadowless illumination
Almost perfect color rendition (Typ. 95)
TFT touch screen for lighting control
Adjustable beam sizes to user preferences
Suitable for use with Laminar Flow functional ceilings
Easy to clean
Minimum Energy Consumption
60.000 hours LED life
Indirect Endo light for endoscopic operations



DISPOSABLE STERILIZATION PRODUCTS

AYGÜN continues expanding its product range by adding other single use medical products to the completely silicone medical drainage systems needed by surgery. With its ISO 7 clean room and by carrying its expertise on sterilization and operation solutions one step further, AYGÜN offers professional service to its valued customers in disposable medical items as well.

DISPOSABLE PRODUCTS MODELS

Reusable Laryngeal Mask
Silicone Penrose Drain Tube
Spiral In Tubes
Silicone Nutrition Tube
Silicone Round Drain
Silicone Flat-Soft Drain
Silicone Flat Drain
Intubation Tube
PVC Laryngeal Mask
Silicone Penrose Drain
Silicone Thorax Drain
Tracheostomy tube
Intubation Tube
Vac Silicone Drain
Oxygen Mask

for more

visit us

www.aygun.com

GROWING UP TOGETHER

AYGÜN has an actively growing position in the sector through using a high technology and innovative institutional structure.



OUR VISION

The vision of AYGÜN is to grow in health sector according to the developing technology and sectoral innovations and serve humanity by producing new project and products appropriate to these innovations.

OUR MISSION

AYGÜN builds projects that can contribute to human health all over the world and integrates these projects to its production area and products in the light of technological developments. It constantly stays active with its innovative and explorer soul and remains taking part among the leader companies ruling the sector.

QUALITY MANAGEMENT SYSTEM

- ISO 9001:2015
- ISO 14001:2015
- OHSAS 18001:2007
- ISO 13485:2016
- 93/42/EEC
- FDA 510 (K)





AYGUN®
SURGICAL INSTRUMENTS CO., INC.

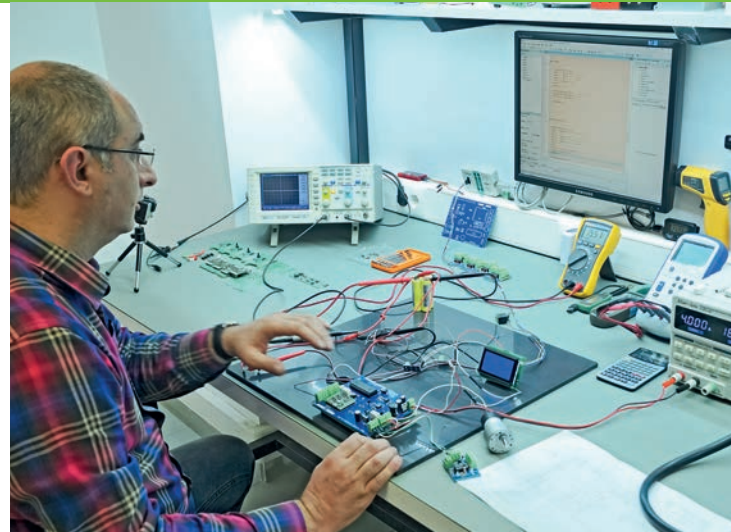
PRODUCTION

Sense of high-grade quality in each process from raw material supply to the shipment is combined with integrated quality management system according to the standards. A big stuff gathered under the same roof and adopted importance of teamwork carry all stages above the dreams and makes what is desired real.

TECHNICAL INFRASTRUCTURE

CNC Machines
Hydraulic and Eccentric Presses
Hot Presses
Conventional CNC Machines
Mold Design and Molding Technology
3D Modelling Technology
Thermoforming
Cutting Machines

Electronic Design and Manufacturing Engineering
Software Technology
Fine Mechanic Techniques
Hardening
Laser Technology
Silicone Extrusion Technology
Clean Room – ISO 7
Chemical Coating and Anodizing Technology





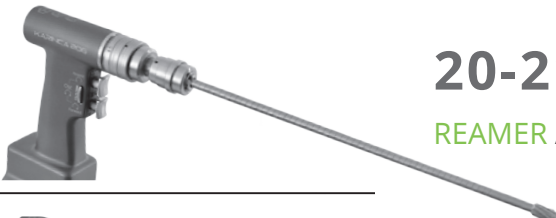





COMBINATION OF PRECIOUS HIGH TECHNOLOGY PRODUCTION MACHINES AND PERFECT CRAFTSMANSHIP

New product development desire and need began in minds becomes sharable and interpretable with 3D printers and technical drawings. After setting the models and testing the prototypes, the production process starts for the approved designs. The production starts with combination of high technology production machines and perfect craftsmanship.

RESEARCH, DEVELOPMENT, QUALITY

AYGÜN increases its power with its endless R&D works. It makes all needed investments so as to research and develop even the smallest part of the complicated products manufactured and carries out successful projects with its professional engineer team. It both develops the existing products with today's technology and performs serious works on new product designs.

TABLE OF CONTENTS

	16-17 DRILL ATTACHMENT
	18-19 SHANK DRILL BIT ATTACHMENT
	20-21 REAMER ATTACHMENT
	22-23 ACETABULAR REAMER ATTACHMENT
	24 QUICK - ACTION CHUCK (K-wire driver)
	25 RECIPROCATING SAW SYSTEM
	26-29 SAGITTAL SAW SYSTEM
	30 STERNUM SAW SYSTEM

31 OSCILLATING SAW SYSTEM (Re-Operation)	
32 ORTHOPEDIC SET	
33 DRILL SET	
34 SAGITTAL SAW SET	
35 RECIPROCATING SAW SET	
36 STERNAL SAW SET	
37 CARDIO VASCULAR SET	
38-39 CONTAINER SET FOR STERILIZATION	

Power, Precision and Innovation...

- Less Weight, High Power
- Next Generation Cutting Technology
- New Generation Surgical Motor Technology
- Li-ion Battery Technology



Sagittal Saw System



Hexa - Function Drill System

- Drill Mode (F&R)
- Drill Oscillation Mode
- Screwing Mode (F&R)
- Tapping Mode
- Reamer Mode (F&R)
- Reamer Oscillation Mode



Reciprocating Saw System



Sternum Saw System

KARINCA 206

- Light weight Karinca 206 provides efficient and reliable cutting performance with new generation powerful motor;
- One hand piece solution for reaming, high speed drilling, screw driving and tapping functions with high torque performance;
- Lithium-ion battery technology provides consistent power during the operation;
- Easy handling and ergonomic design of Karinca 206 ensures reliable and better controlled operation results;
- Efficient torque for acetabular reaming;
- Karinca 206 is an innovative new generation power tool with high quality engineering materials;
- Providing efficiency with Engineering Solutions;
- Extended battery life;
- Comfortable ergonomic design;
- Easy attachment assembly;
- High speed drilling and oscillating.



Karinca 206 power box records all data about usage for technical service information.



Power box oled screen enables users to indicate battery capacity by pressing the test button.



Sterile funnel



“ Mechanical structure of Karinca 206 Handpieces provides users non-restrictive washing and disinfection.”

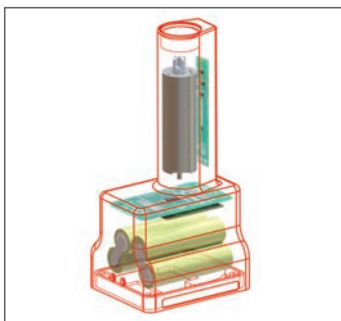
BATTERY CHARGING UNITS



Karinca 206 provides users to observe battery level without removing the power box.
Karinca 206 can also provide information about battery process cycles like how many times, minutes, seconds the battery is charged, half charged or fully charged.



Power box oled screen enables users to indicate battery capacity by pressing the test button.



Battery, motor and all electronical components are combined together and exempt from sterilization by aim of increasing life time of the device



M206-226
Charger unit for 1 battery

- Main voltage 100-240 Volts, 50-60 Hz
- Charging current 2 A
- Charging voltage 16.8 Volts
- Protections: Short circuit / Overload / Over voltage
- Charging indicator led
- Battery not included
- 130 x 250 x 130 mm / 1300 g



M206-227
Charger unit for 2 batteries

- Main voltage 100-240 Volts, 50-60 Hz
- Charging current 2 A (x2)
- Charging voltage 16.8 Volts
- Protections: Short circuit / Overload / Over voltage
- Charging indicator led
- Battery not included
- 230 x 250 x 130 mm / 2150 g



M206-229
Charger unit for 4 batteries

- Main voltage 100-240 Volts, 50-60 Hz
- Charging current 2 A (x4)
- Charging voltage 16.8 Volts
- Protections: Short circuit / Overload / Over voltage
- Charging indicator led
- Battery not included
- 430 x 250 x 130 mm / 3850 g



M206-210
Power box

- Powerful brushless DC motor technology
- Battery capacity: 2.5 Ah
- Voltage: 14.8 Volts
- Integrated oled screen and audible alert notification
- Not autoclavable
- 75 x 61 x 160 mm / 465 g



Sterile funnel



M206-212
Autoclavable sterile funnel for aseptic battery loading

- Steam sterilisable
- 30 x 74 x 104 mm / 55 g

DRILL-REAMER HANDPIECE



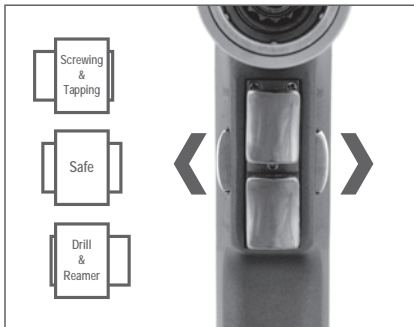
Six
Different
Trigger
Functions

M206-200
Hexa - Function Drill System
(Without drills and power box)

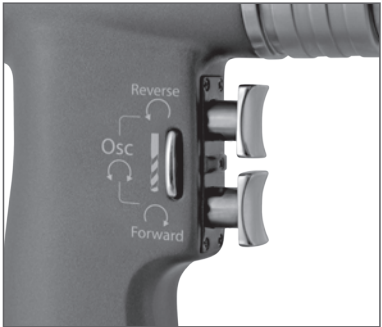
- Dual trigger system for speed control and direction control
- Steam sterilisable
- Drill Mode F&R (1200 rpm)
- Drill Oscillation Mode (1200 cpm)
- Screwing Mode F&R (150 rpm)
- Tapping Mode (150 rpm)
- Reamer Mode F&R (300 rpm)
- Reamer Oscillation Mode (300 cpm)
- Cannulated Ø 4 mm
- 77 x 137 x 212 mm / 920 g



Screwing and tapping options enable smooth control with one-handpiece solution.



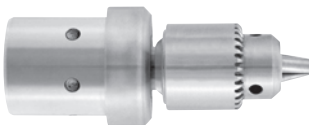
Drilling, Reaming, Screwing and Tapping options in one-handpiece



Forward, reverse and oscillation mode options provide versatile alternatives to the users.

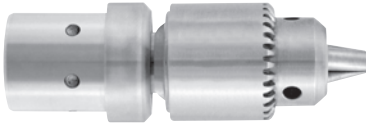
DRILL ATTACHMENTS

M206-308
Drill attachment with keyed chuck
Ø4 mm Cannulated
Ø 1.0 mm - 4.0 mm
1200 rpm / 5 Nm
29 x 70 mm / 140 g



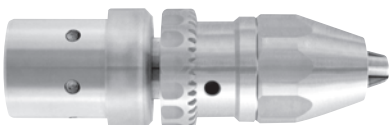
M8-473
Chuck key
for M206-308

M206-309
Drill attachment with keyed chuck
Ø4 mm Cannulated
Ø 1.0 mm - 6.35 mm
1200 rpm / 5 Nm
29 x 87 mm / 205 g



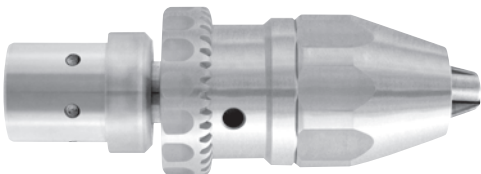
M7-250
Chuck key
for M206-309

M206-311
Drill attachment with hybrid chuck
Both keyed and keyless operation
Ø4 mm Cannulated
Ø 0.3 mm - 3 mm
1200 rpm / 5 Nm
29 x 87 mm / 225 g



M7-253
Chuck key
for M206-311

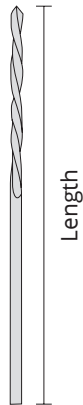
M206-310
Drill attachment with hybrid chuck
Both keyed and keyless operation
Ø4 mm Cannulated
Ø 1.0 mm - 7.4 mm
1200 rpm / 5 Nm
34 x 100 mm / 320 g



M7-252
Chuck key
for M206-310

DRILL BITS

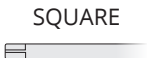
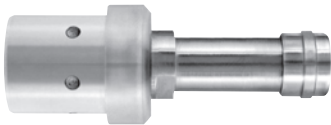
Code	(Ø) Diameter mm	Length mm
M7-500	1.5	60
M7-501	2.0	100
M7-502	2.5	100
M7-503	2.7	100
M7-504	3.0	100
M7-505	3.2	100
M7-506	3.5	100
M7-507	4.0	110
M7-508	4.5	130
M7-509	5.0	160
M7-510	6.0	160



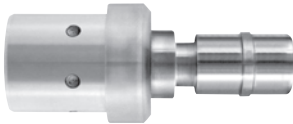
SHANK DRILL BIT ATTACHMENTS



M206-360
Attachment for SQUARE shank
1200 rpm / 5 Nm
29 x 75 mm / 115 g



M206-361
Attachment for AO shank
1200 rpm / 5 Nm
29 x 73 mm / 125 g



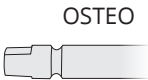
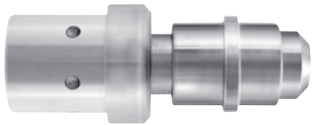
M206-362
Attachment for TRINKE shank
1200 rpm / 5 Nm
29 x 70 mm / 130 g



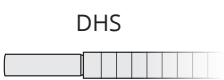
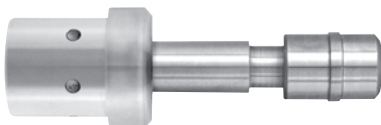
SHANK DRILL BITS

	Length mm	(Ø) Diameter mm	SQUARE	AO	TRINKE
	38	1.5	M7-520	M7-540	M7-560
	45	2.0	M7-521	M7-541	M7-561
	53	2.5	M7-522	M7-542	M7-562
	57	2.7	M7-523	M7-543	M7-563
	57	3.0	M7-524	M7-544	M7-564
	57	3.2	M7-525	M7-545	M7-565
	65	3.5	M7-526	M7-546	M7-566
	70	4.0	M7-527	M7-547	M7-567
	70	4.5	M7-528	M7-548	M7-568
	95	5.0	M7-529	M7-549	M7-569
	120	6.0	M7-530	M7-550	M7-570

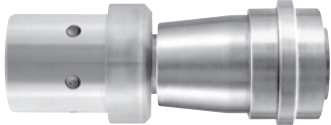
M206-375
Attachment for OSTEO shank
Ø4 mm Cannulated
300 rpm / 22 Nm
29 x 78 mm / 160 g



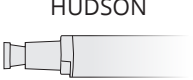
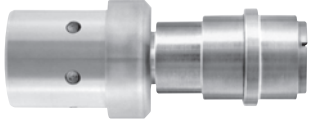
M206-376
Attachment for DHS shank
Ø4 mm Cannulated
300 rpm / 22 Nm
29 x 100 mm / 170 g



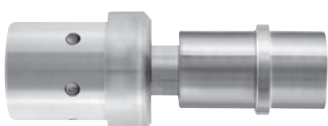
M206-377
Attachment for AO-PROTEK shank
Ø4 mm Cannulated
300 rpm / 22 Nm
29 x 82 mm / 210 g



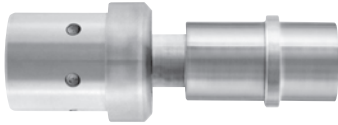
M206-378
Attachment for HUDSON shank
Ø4 mm Cannulated
300 rpm / 22 Nm
29 x 68 mm / 145 g



M206-379
Attachment for HARRIS shank
Ø4 mm Cannulated
300 rpm / 22 Nm
29 x 102 mm / 145 g



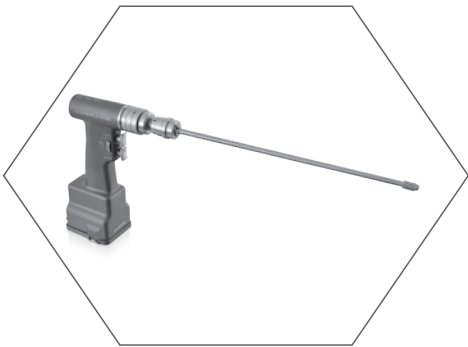
M206-380
Attachment for ZIMMER-HUDSON shank
Ø4 mm Cannulated
300 rpm / 22 Nm
29 x 115 mm / 155 g



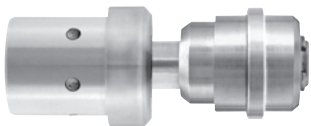
M206-381
Attachment for ZIMMER shank
Ø4 mm Cannulated
300 rpm / 22 Nm
29 x 115 mm / 155 g



REAMER ATTACHMENT



M206-330
Reamer attachment for wire and pin
Cannulated Ø 4 mm
300 rpm / 22 Nm
29 x 80 mm / 185 g



DIN 58809



M7-905
Adaptor for AO-Protek shank
Cannulated Ø 4 mm



DIN 58809

AO-PROTEK



M7-908
Adaptor for Hudson
Cannulated Ø 4 mm



DIN 58809

HUDSON



M7-907
Adaptor for Harris
Cannulated Ø 4 mm

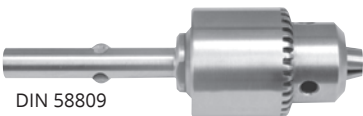


DIN 58809

HARRIS

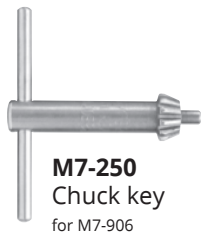


M7-906
Universal three-jaw chuck
with key M7-250
Max Ø 6.35 mm
Cannulated Ø 4 mm



DIN 58809

DRILL



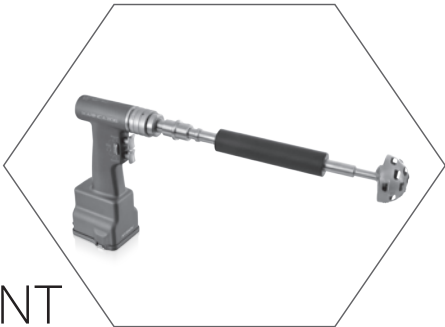
M7-250
Chuck key
for M7-906

REAMERS

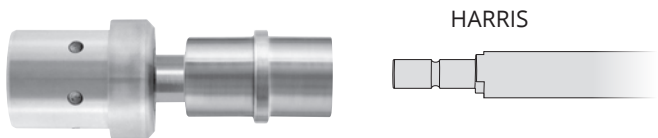
Intramedullary reamers, flexible, with drilling heads		Guides, blunt			Guides, with drill tip		
Ø mm	Length 430 mm	Ø mm	Length 600 mm	Length 990 mm	Ø mm	Length 600 mm	Length 990 mm
5.5	M7-920						
6.0	M7-921						
6.5	M7-922	1.9	M7-960	M7-961	1.9	M7-962	
7.0	M7-923						
7.5	M7-924						
8.0	M7-925						
8.5	M7-926						
9.0	M7-927						
9.5	M7-928						
10.0	M7-929						
10.5	M7-930						
11.0	M7-931						
11.5	M7-932						
12.0	M7-933	3.4	M7-963	M7-964	3.4		M7-965
12.5	M7-934						
13.0	M7-935						
13.5	M7-936						
14.0	M7-937						
14.5	M7-938						
15.0	M7-939						
15.5	M7-940						
16.0	M7-941						
16.5	M7-942						
17.0	M7-943						
17.5	M7-944						
18.0	M7-945						
18.5	M7-946						
19.0	M7-947						

DIN 58809

ACETABULAR REAMER ATTACHMENT

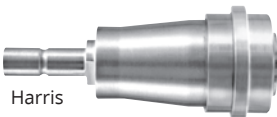


M206-320
Acetabular reamer attachment
150 - 300 rpm / 35 Nm
29 x 80 mm / 175 g



HARRIS

M7-705
Adaptor for AO-Protek shaft

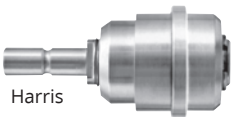


Harris

AO-PROTEK



M7-706
Adaptor for DIN 58809 shaft



Harris

DIN 58809

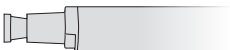


M7-707
Adaptor for Hudson shaft



Harris

HUDSON



M7-708
Universal three-jaw chuck
with key M7-250



Harris

DRILL



M7-250
Chuck key
for M7-708

ACETABULAR REAMER TOOLS



M7-709
Shaft only,
With Harris Connection
for M7-750, M7-757



M7-789
Movable protector case,
Fits with all reamer shafts

Only Acetabular
Reamer



M7-750	Ø 46 mm
M7-751	Ø 48 mm
M7-752	Ø 50 mm
M7-753	Ø 52 mm
M7-754	Ø 56 mm
M7-755	Ø 60 mm
M7-756	Ø 64 mm
M7-757	Ø 68 mm

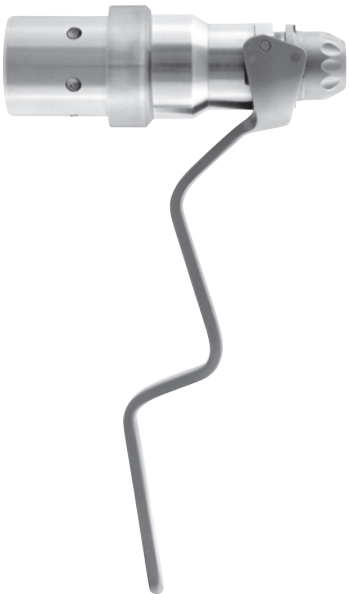
QUICK - ACTION CHUCK

(K-wire Driver)



M206-352
Quick - action chuck (K-wire Driver)
Cannulated Ø 0.7 mm - 2.5 mm
1200 rpm / 5 Nm
29 X 77 mm / 300 g

M206-353
Quick - action chuck (K-wire Driver)
Cannulated Ø 1.5 mm - 4.0 mm
1200 rpm / 5 Nm
29 X 77 mm / 300 g



RECIPROCATING SAW SYSTEM



M206-235
Reciprocating saw system
(Without saw blades and power box)

High-Low speed options
Steam sterilisable
11.000 - 14.000 cpm / \longleftrightarrow 4 mm
77 x 182 x 212 mm / 960 g

RECIPROCATING SAW BLADES

M103-236
Usable length: 62 mm
Width: 8 mm



M103-237
Usable length: 75 mm
Width: 13 mm



M103-238
Usable length: 60 mm
Width: 13 mm



M103-239
Usable length: 75 mm
Width: 13 mm



Power, Precision and Innovation...

SAGITTAL SAW SYSTEM

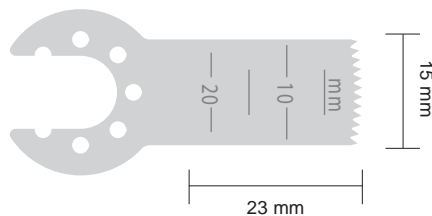


M206-300
Sagittal saw system
(Without saw blades and power box)

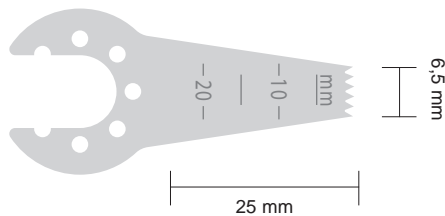
High-Low speed options
Steam sterilisable
10.000 - 12.000 cpm / $\angle 4^{\circ} 50'$
77 x 158 x 218 mm / 930 g



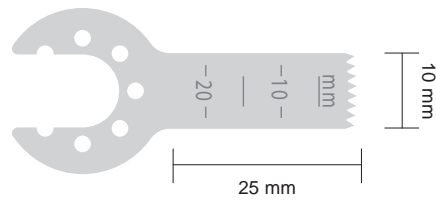
SAGITTAL SAW BLADES



M103-1110
Material Thickness : 0.4 mm
Cutting Thickness : 0.6 mm

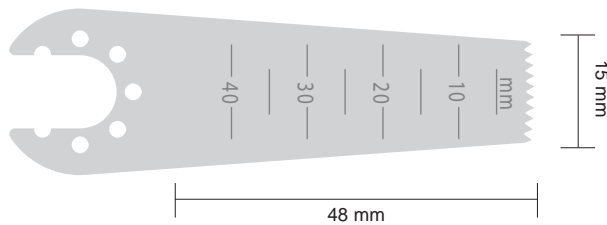


M103-1111
Material Thickness : 0.4 mm
Cutting Thickness : 0.6 mm

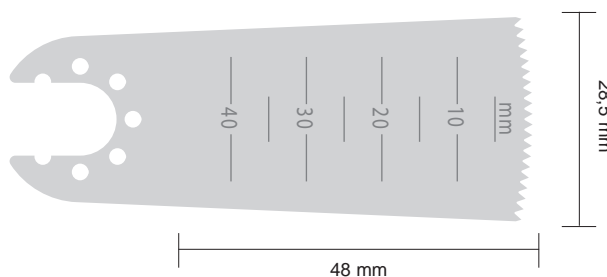


M103-1112
Material Thickness : 0.4 mm
Cutting Thickness : 0.6 mm

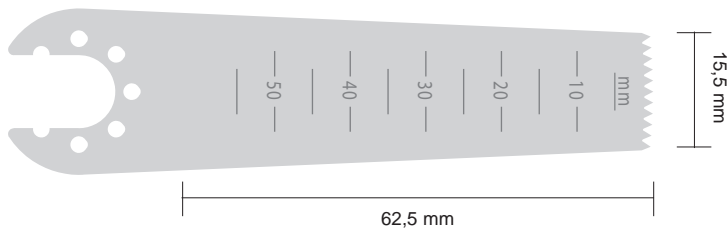
M103-1113
Material Thickness : 0.4 mm
Cutting Thickness : 0.6 mm



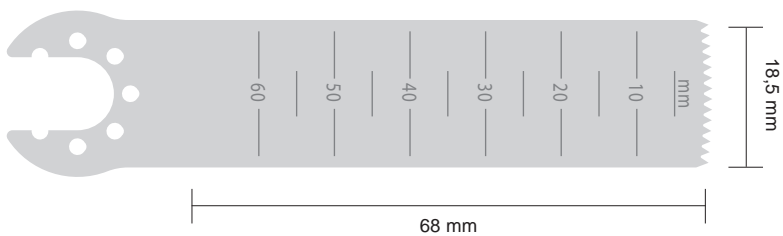
M103-1114
Material Thickness : 0.4 mm
Cutting Thickness : 0.6 mm



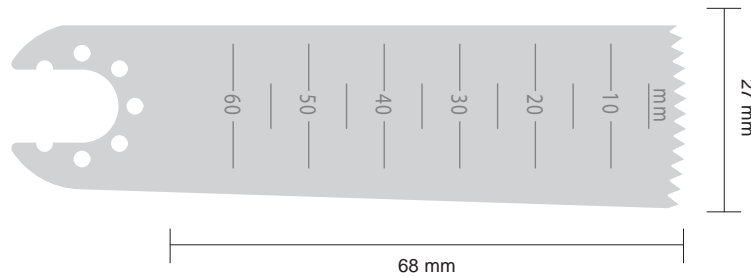
M103-1115
Material Thickness : 0.6 mm
Cutting Thickness : 0.8 mm



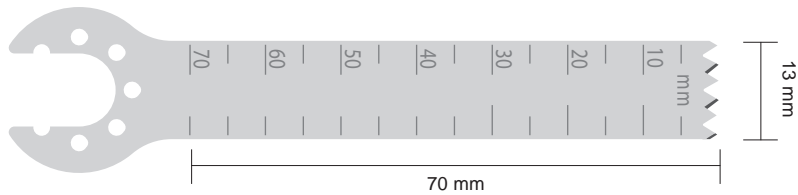
M103-1116
Material Thickness : 0.6 mm
Cutting Thickness : 0.8 mm



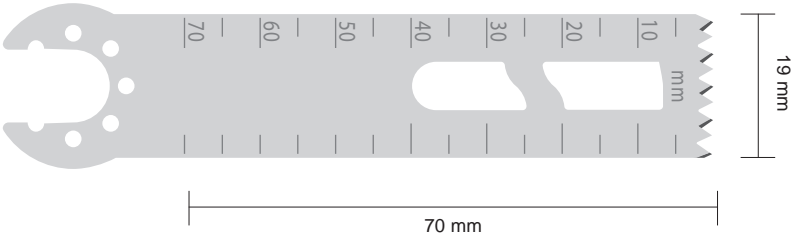
M103-1117
Material Thickness : 0.6 mm
Cutting Thickness : 0.8 mm



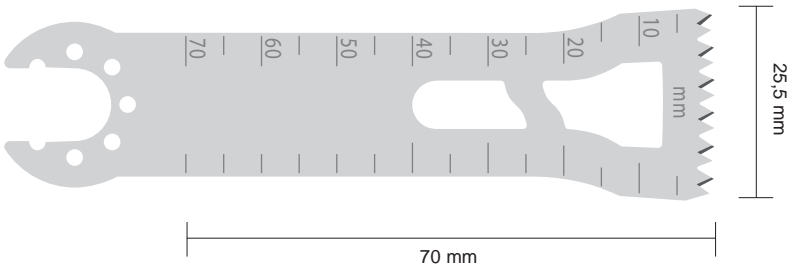
M103-1118
Material Thickness : 1.19 mm



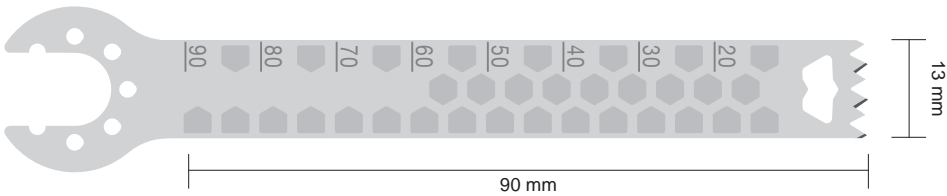
M103-1119
Material Thickness: 1 mm



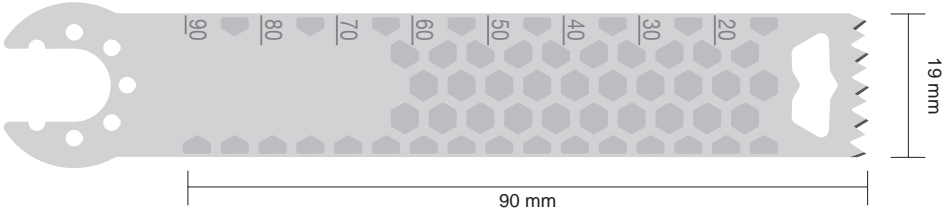
M103-1120
Material Thickness: 1 mm



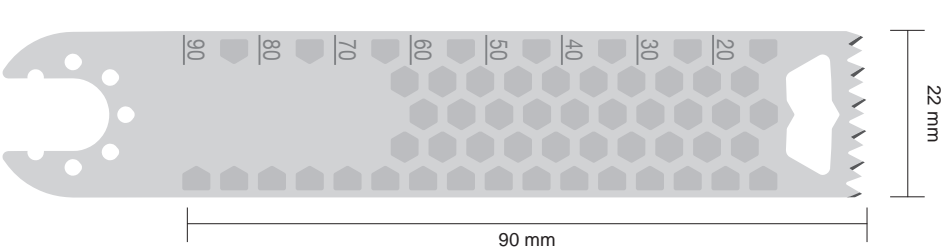
M103-1121 Material Thickness: 1 mm
M103-1122 1.19 mm
M103-1123 1.27 mm
M103-1124 1.37 mm



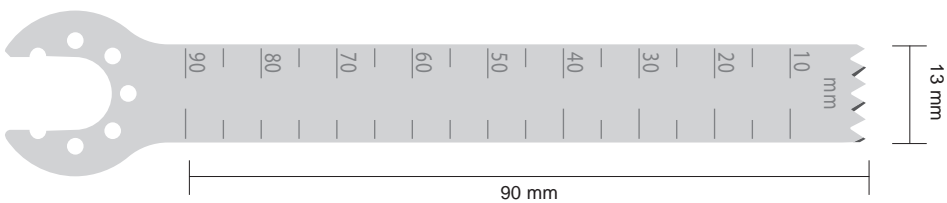
M103-1125 Material Thickness: 1.19 mm
M103-1126 1.27 mm
M103-1127 1.37 mm



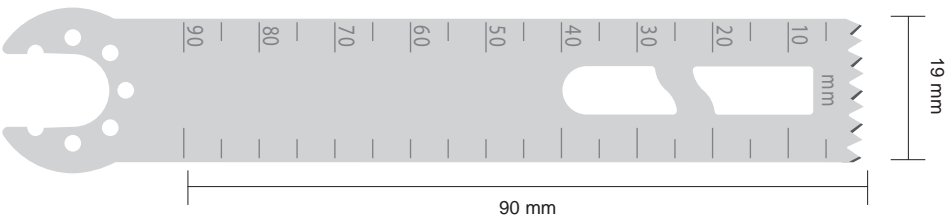
M103-1128 Material Thickness: 1 mm
M103-1129 1.19 mm
M103-1130 1.27 mm
M103-1131 1.37 mm
M103-1132 1.47 mm



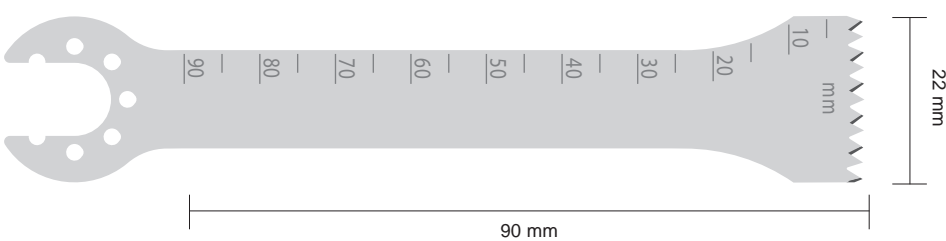
M103-1133 Material Thickness: 1 mm
M103-1134 1.19 mm
M103-1135 1.27 mm



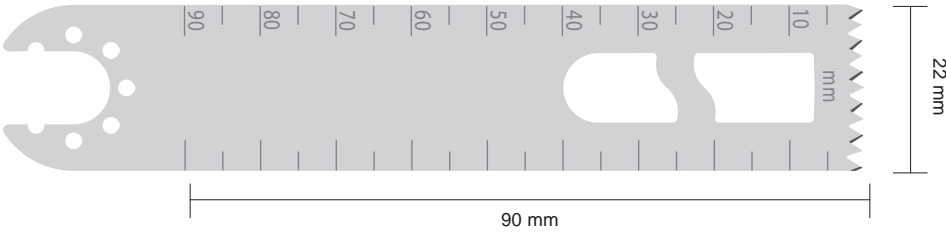
M103-1136 Material Thickness: 1.27 mm
M103-1137 1.37 mm



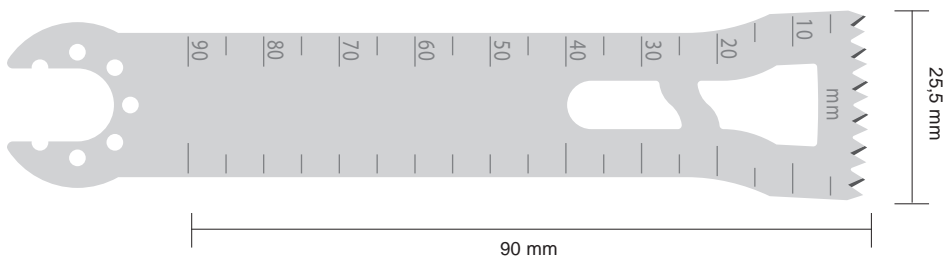
M103-1138
Material Thickness: 1.27 mm



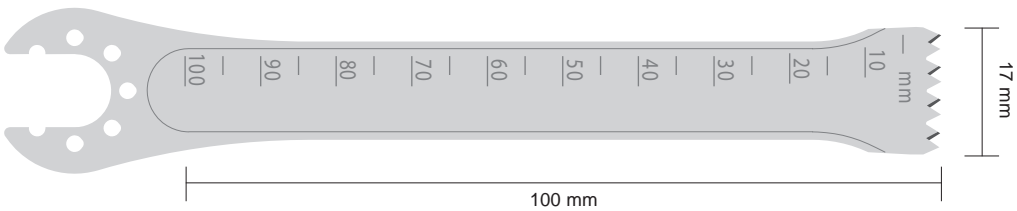
M103-1139 Material Thickness: 1 mm
M103-1140 1.27 mm



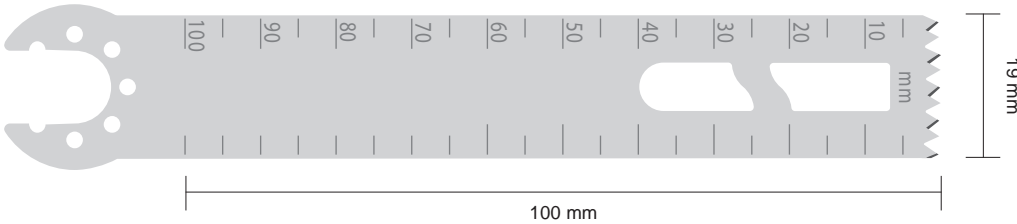
M103-1141 Material Thickness: 1 mm
M103-1142 1.19 mm
M103-1143 1.27 mm
M103-1144 1.37 mm
M103-1145 1.47 mm



M103-1146
Material Thickness: 1.27 mm



M103-1147
Material Thickness: 1.19 mm



STERNUM SAW SYSTEM

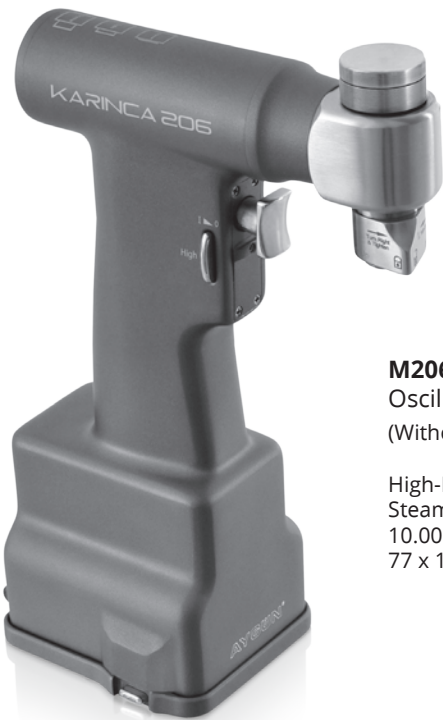


M206-240
Sternum saw system
(Without saw blades, guide and power box)

High-Low speed options
Steam sterilisable
11.000 - 14.000 cpm / \longleftrightarrow 4 mm
77 x 180 x 212 mm / 1040 g

OSCILLATING SAW SYSTEM

(Re-operation)



M206-300
Oscillating saw system
(Without saw blades and power box)

High-Low speed options
Steam sterilisable
10.000 - 12.000 cpm / \angle 4° 50'
77 x 158 x 218 mm / 930 g

M103-715
Adult saw guide



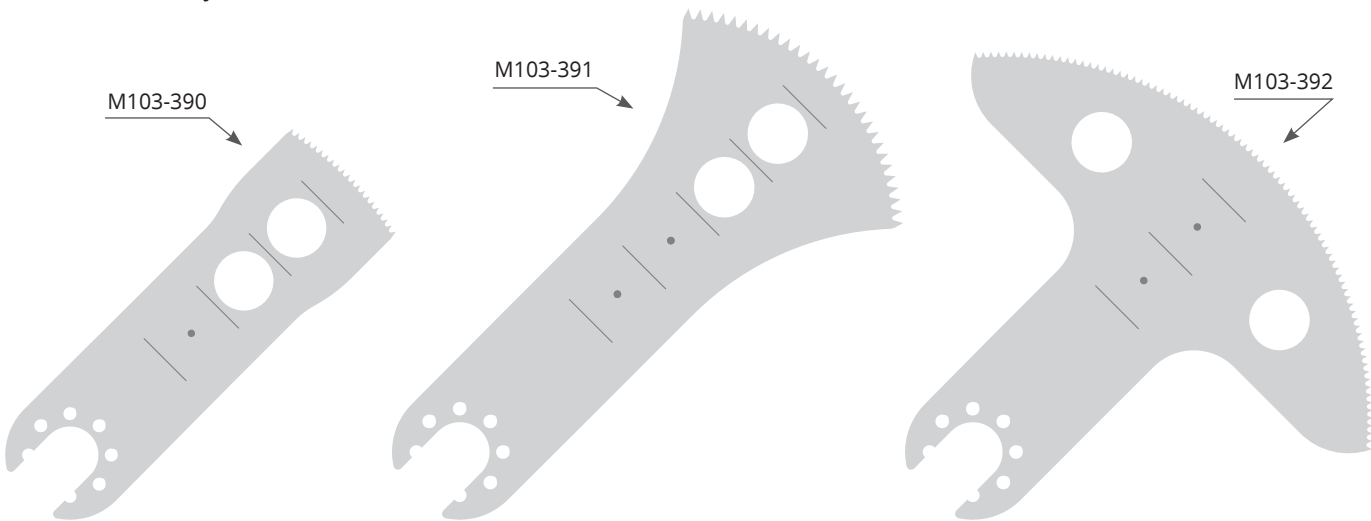
Adult saw blade	Code	Length	Usable Length	Blade Thickness	Cutting Thickness
	M103-709	58 mm	35 mm	0.6 mm	1 mm
	M103-710	58 mm	35 mm	0.8 mm	1.2 mm

M103-716
Pediatric saw guide



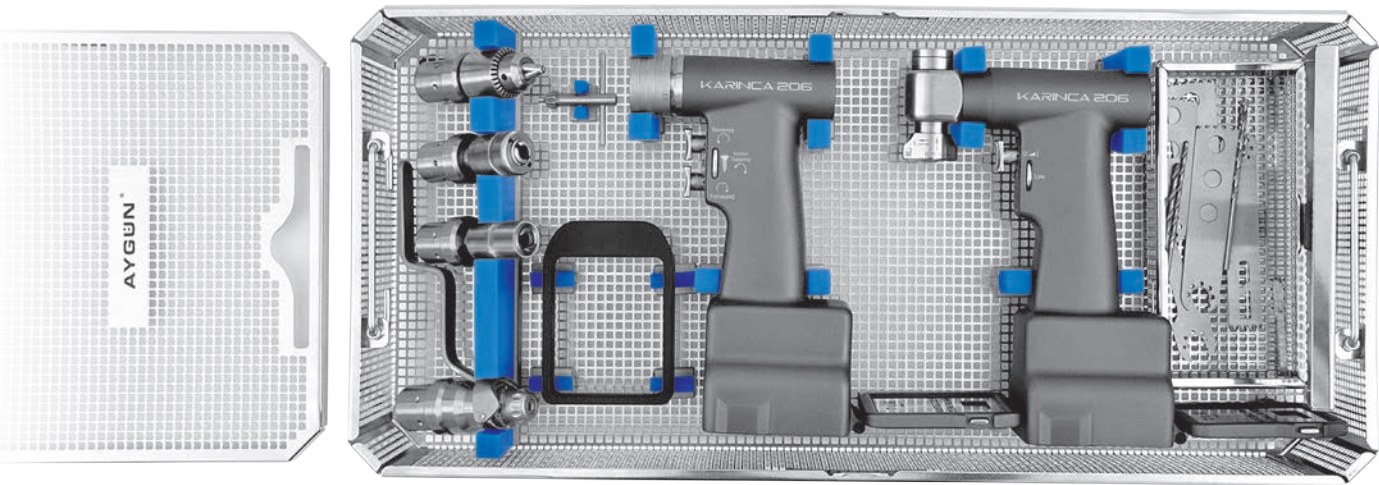
Pediatric saw blade	Code	Length	Usable Length	Blade Thickness	Cutting Thickness
	M103-711	40 mm	18 mm	0.6 mm	0.6 mm
	M103-712	40 mm	18 mm	0.6 mm	0.8 mm

BLADES (for M206-300)



Code	Length	Width	Thickness
M103-390	35 mm	25 mm	0.8 mm
M103-391	50 mm	40 mm	0.8 mm
M103-392	35 mm	75 mm	0.8 mm

ORTHOPEDIC SET



M206-1001 Orthopedic Set

Set Content

M206-200	Karınca Drill-Reamer Handpiece
M206-210	Power box (2 pcs)
M206-212	Autoclavable sterile funnel for aseptic battery loading
M206-227	Charger unit for 2 batteries
M206-309	Drill attachment with keyed chuck
M7-502	Drill bit
M7-504	Drill bit
M7-250	Chuck key for M206-309
M206-300	Karınca Sagittal saw Handpiece
M103-1117	Sagittal saw blade
M103-1146	Sagittal saw blade
M206-320	Acetabular reamer attachment
M206-330	Reamer attachment for wire and pin
M206-352	Quick - action chuck (K-wire Driver)
M14-816	Spray oil
K3-2723	Basket with silicone fixations 546 x 259 x 114 mm
K6-022	Standard Model Container 600 x 285 x 155 mm



M206-210
Power box
(2 pcs)



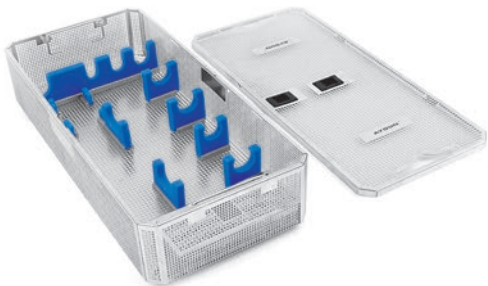
M206-227
Charger unit for 2 batteries



M14-816
Spray oil, for motor and additional pcs.
After cleaning of every use. Oil inside of all
moving pcs of device by spraying method
and run the device for 2-3 seconds.

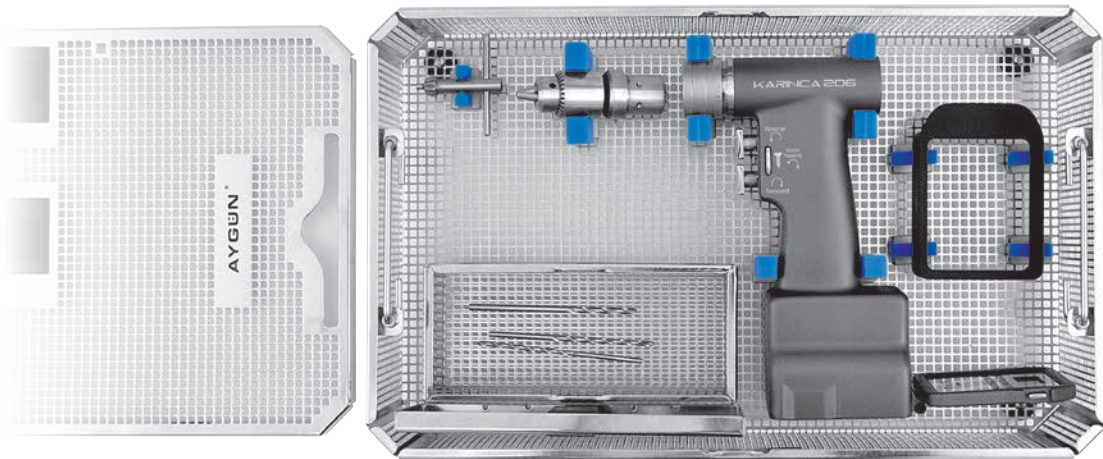


K6-022
Standard Model Container
Box (non perforated) Lid perforated
600 x 285 x 155 mm



K3-2723
Basket with silicone fixations
546 x 259 x 114 mm

DRILL SET



M206-1005 Drill Set

Set Content

M206-200	Karınca Drill-Reamer Handpiece
M206-210	Power box
M206-212	Autoclavable sterile funnel for aseptic battery loading
M206-226	Charger unit for 1 battery
M206-309	Drill attachment with keyed chuck
M7-502	Drill bit
M7-504	Drill bit
M7-250	Chuck key for M206-309
M14-816	Spray oil
K3-2731	Basket with silicone fixations 411 x 259 x 114 mm
K6-252	Standard Model Container 475 x 285 x 155 mm



M206-210
Power box



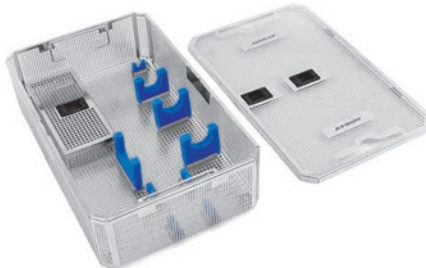
M206-226
Charger unit for 1 battery



M14-816
Spray oil, for motor and additional pcs.
After cleaning of every use. Oil inside of all
moving pcs of device by spraying method
and run the device for 2-3 seconds.

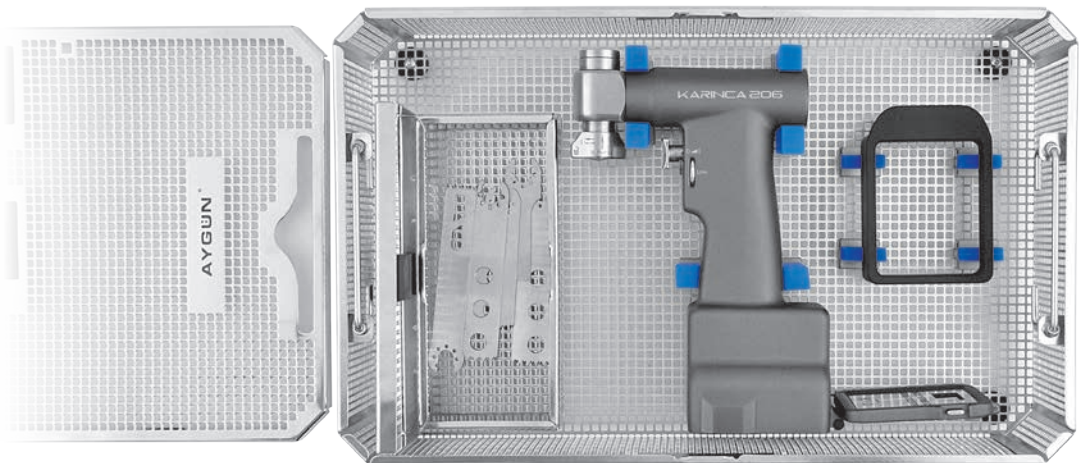


K6-252
Standard Model Container
Box (non perforated) Lid perforated
475 x 285 x 155 mm



K3-2731
Basket with silicone fixations
411 x 259 x 114 mm

SAGITTAL SAW SET



M206-1007 Sagittal Saw Set

Set Content	
M206-300	Karinca Sagittal saw Handpiece
M206-210	Power box
M206-212	Autoclavable sterile funnel for aseptic battery loading
M206-226	Charger unit for 1 battery
M103-1117	Sagittal saw blade
M103-1146	Sagittal saw blade
M14-816	Spray oil
K3-2731-S2	Basket with silicone fixations 411 x 259 x 114 mm
K6-252	Standard Model Container 475 x 285 x 155 mm



M206-210
Power box



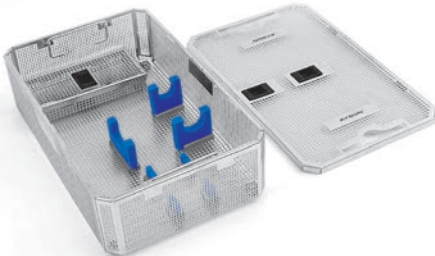
M206-226
Charger unit for 1 battery



M14-816
Spray oil, for motor and additional pcs.
After cleaning of every use. Oil inside of all moving pcs of device by spraying method and run the device for 2-3 seconds.

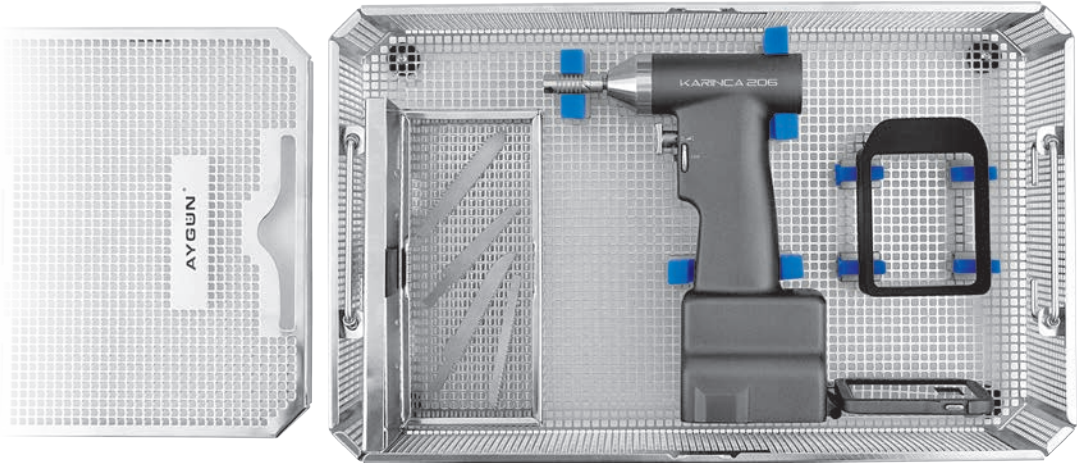


K6-252
Standard Model Container
Box (non perforated) Lid perforated
475 x 285 x 155 mm



K3-2731-S2
Basket with silicone fixations
411 x 259 x 114 mm

RECIPROCATING SAW SET



M206-1013 Reciprocating Saw Set

Set Content	
M206-235	Karinca Reciprocating saw Handpiece
M206-210	Power box
M206-212	Autoclavable sterile funnel for aseptic battery loading
M206-226	Charger unit for 1 battery
M103-239	Reciprocating saw blade
M14-816	Spray oil
K3-2731-S3	Basket with silicone fixations 411 x 259 x 114 mm
K6-252	Standard Model Container 475 x 285 x 155 mm



M206-210
Power box



M206-226
Charger unit for 1 battery



M14-816
Spray oil, for motor and additional pcs.
After cleaning of every use. Oil inside of all moving pcs of device by spraying method and run the device for 2-3 seconds.

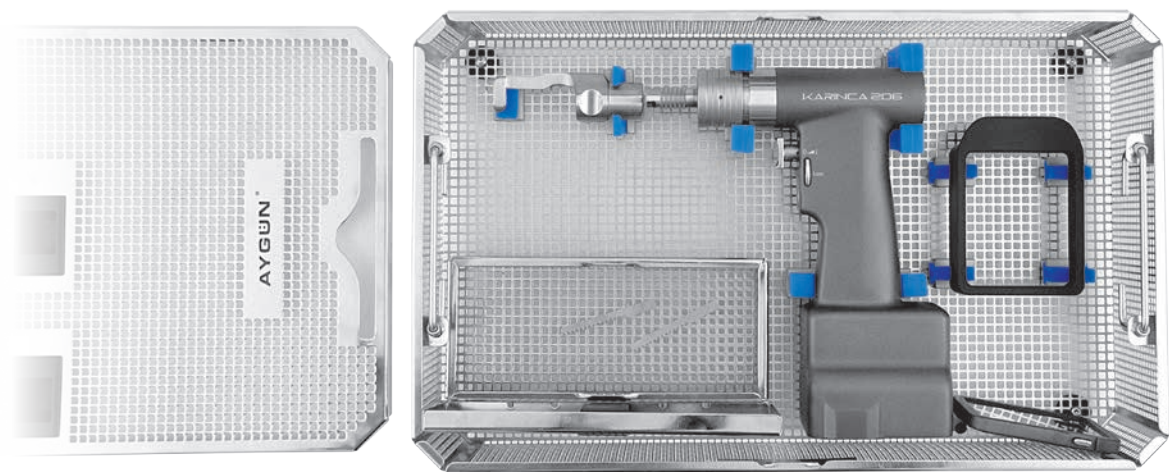


K6-252
Standard Model Container
Box (non perforated) Lid perforated
475 x 285 x 155 mm



K3-2731-S3
Basket with silicone fixations
411 x 259 x 114 mm

STERNAL SAW SET



M206-1009 Sternal Saw Set

Set Content

M206-240	Karinca Sternum saw Handpiece
M206-210	Power box
M206-212	Autoclavable sterile funnel for aseptic battery loading
M206-226	Charger unit for 1 battery
M103-715	Adult saw guide
M103-710	Adult saw blade
M14-816	Spray oil
K3-2731-S4	Basket with silicone fixations 411 x 259 x 114 mm
K6-252	Standard Model Container 475 x 285 x 155 mm



M206-210
Power box



M206-226
Charger unit for 1 battery



M14-816
Spray oil, for motor and additional pcs.
After cleaning of every use. Oil inside of all moving pcs of device by spraying method and run the device for 2-3 seconds.

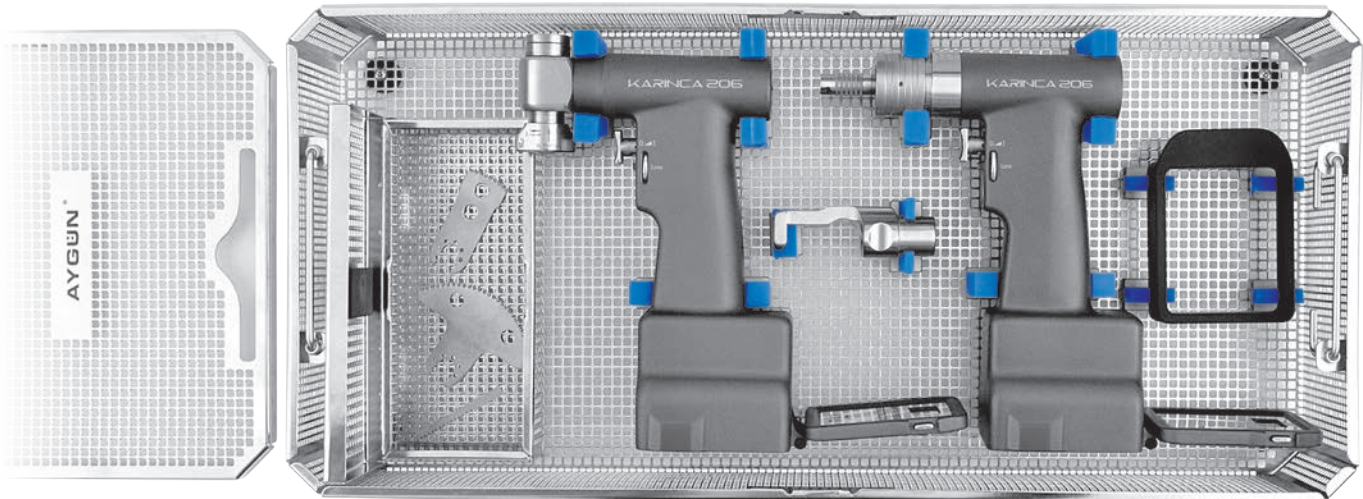


K6-252
Standard Model Container
Box (non perforated) Lid perforated
475 x 285 x 155 mm



K3-2731-S4
Basket with silicone fixations
411 x 259 x 114 mm

CARDIO VASCULAR SET



M206-1011 Cardio Vascular Set

Set Content

M206-240	Karinca Sternum saw Handpiece
M206-210	Power box (2 pcs)
M206-212	Autoclavable sterile funnel for aseptic battery loading
M206-227	Charger unit for 2 batteries
M206-300	Karinca Re-Operation saw Handpiece
M103-715	Adult saw guide
M103-710	Adult saw blade
M103-392	Re-Operation saw blade
M14-816	Spray oil
K3-2723-S2	Basket with silicone fixations 546 x 259 x 114 mm
K6-022	Standard Model Container 600 x 285 x 155 mm



M206-210
Power box
(2 pcs)



M206-227
Charger unit for 2 batteries



M14-816
Spray oil, for motor and additional pcs.
After cleaning of every use. Oil inside of all moving pcs of device by spraying method and run the device for 2-3 seconds.



K6-022
Standard Model Container
Box (non perforated) Lid perforated
600 x 285 x 155 mm



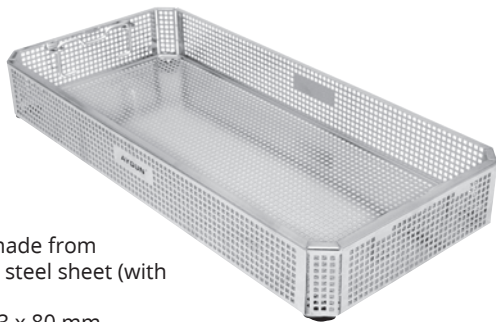
K3-2723-S2
Basket with silicone fixations
546 x 259 x 114 mm

CONTAINER SET FOR STERILIZATION



K8-123V
Lid, B3 Barrier Model
602 x 285 mm

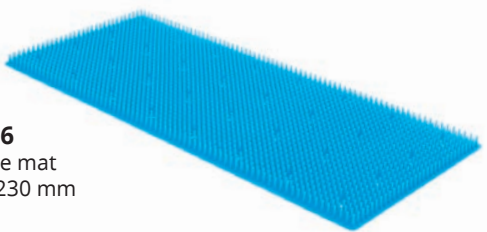
K6-107
Container, non perforated
600 x 272 x 138 mm



K3-742
Basket made from
stainless steel sheet (with
stand)
540 x 253 x 80 mm



K2-462
Wire basket
540 x 250 x 70 mm



K2-526
Silicone mat
520 x 230 mm



K8-343V
Lid, B3 Barrier Model
477 x 285 mm

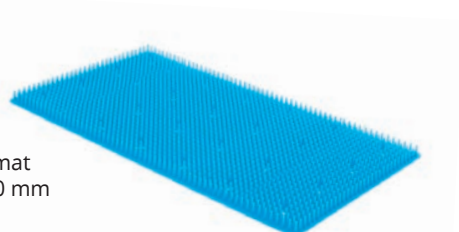
K6-307
Container, non perforated
475 x 272 x 138 mm



K3-750
Basket made from
stainless steel sheet (with
stand)
405 x 253 x 80 mm



K2-1502
Wire basket
405 x 250 x 70 mm



K2-524
Silicone mat
380 x 230 mm



K2-674
Class 6 Emulating Indicator Card
1 Pack (250 pcs)

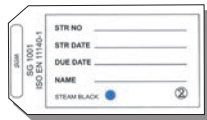


	code	color
Basic Set	K2-700	Red
Thoracotomy	K2-701	Blue
Orthopedic Set	K2-702	Green
Bone Set	K2-703	Yellow
Laminectomy	K2-704	Grey
Neuro Surgery	K2-705	Black
Cardiovascular	K2-706	Pink
Thoracotomy	K2-707	Brown

Identification labels (aluminium)
Coloured identification labels
Engraved to your specifications
Maximum 16 letters



K2-673
Labels (paper)
100 pcs. With indicator.
For small size and special
containers



K2-672
Labels (paper)
100 pcs. With indicator.
For full and half size containers



K1-900
Modular Auto Lock Mechanism (2 Pcs)



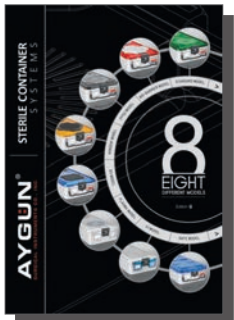
K2-660 red
Security seal
100 pcs made of plastic



K2-740
Single use paper
filter 100 pcs
with indicator.
Aygun mark.



For more information and alternative please see
our Sterilization Container System catalog.
From our website www.aygun.com





Standard Model



Bio-Barrier Model



High Performance
Polymer PPSU Lids



B3-PTFE - Valve - Bio-stop



Mini Bone



Mini Bone
Monoblock



Arthroscopy
Shaver System



Karinca 206



Karinca 208



Plasma Model



Window Model



A1 Model



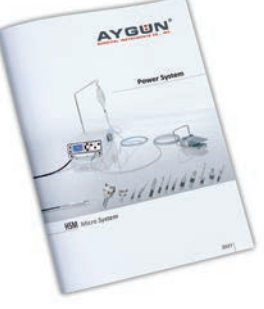
Dental, Mini Model



HSM-2
Neuro System



HSM
Neuro System



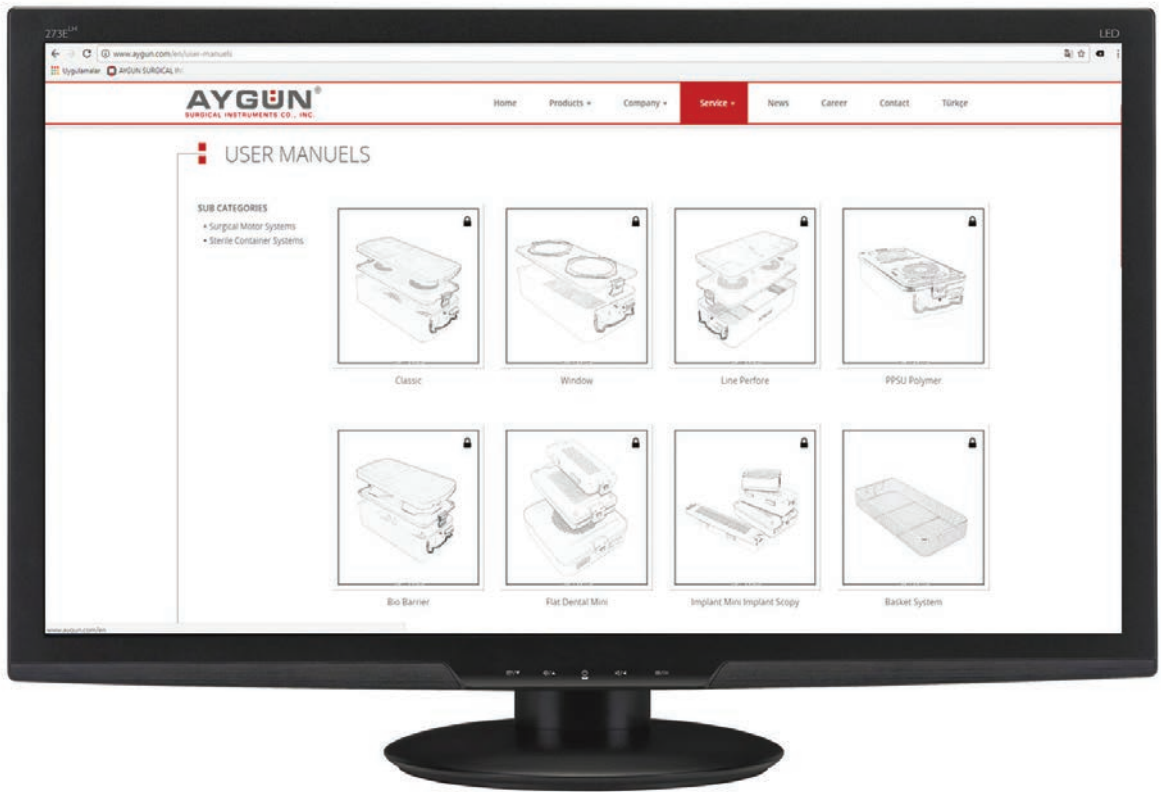
HSM
Micro System



Dermatome ST5



Dermatome



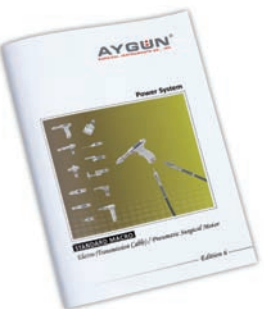
Praxis 3B



Praxis 3



Compact 2



Standard Macro



Standard Micro



Electro Pneumatic
Surgical Motor



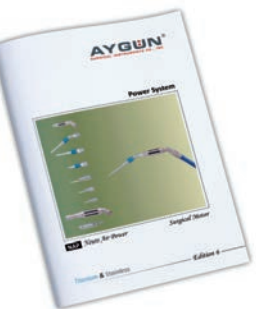
Macro Compact 2



Mini Compact



Mini Surgical Motor



NAP Neuro Air
Power



FACTORY

AYGÜN CERRAHİ ALETLER A.Ş.
Organize Sanayi Bölgesi
Yaşar Doğu Caddesi, No: 76
Kerimbey OSB, 55300, Tekkeköy
SAMSUN, TÜRKİYE

T : +90 (362) 266 66 80
F : +90 (362) 266 93 30

aygun@aygun.com
www.aygun.com