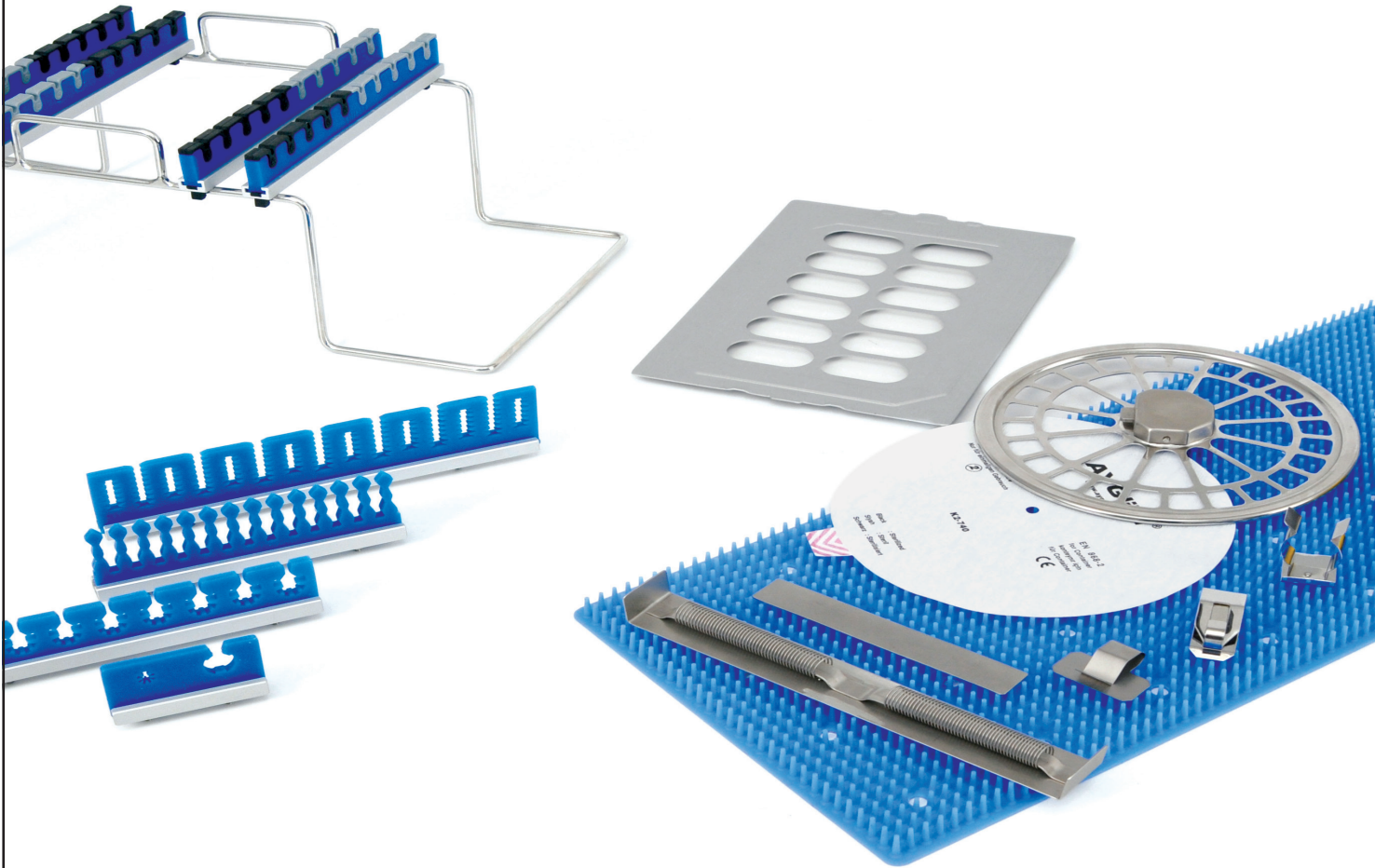
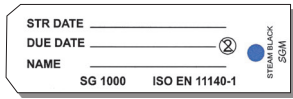


STERILE CONTAINER SYSTEMS



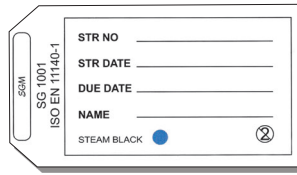
ACCESSORIES

LABELS (paper)



K2-673
100 pcs. With indicator.

For small size and special containers

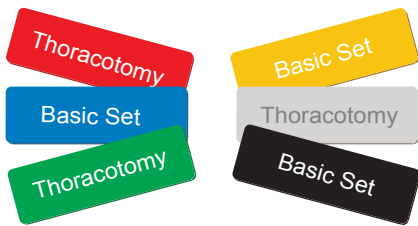


K2-672
100 pcs. With indicator.

For full and Half size containers



IDENTIFICATION LABELS (aluminium)



code	color
K2-700	Red
K2-701	Blue
K2-702	Green
K2-703	Yellow
K2-704	Grey
K2-705	Black

Coloured identification labels
Engraved to your specifications
Maximum 16 letters



IDENTIFICATION (aluminium)

LABEL HOLDER



code	color
K2-560	Red
K2-561	Blue
K2-562	Green
K2-563	Yellow
K2-564	Grey
K2-565	Black

LABELS



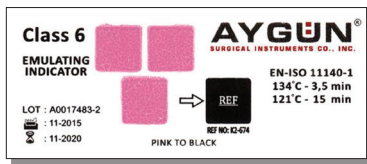
code	color
K2-570	Red
K2-571	Blue
K2-572	Green
K2-573	Yellow
K2-574	Grey
K2-575	Black

Coloured identification labels
Engraved to your specification



➡ Grey coloured recommended for use in Sterrad.
Color fading By effect of Hydrogen Peroxide Gas Plasma on other colors.

EMULATING INDICATOR



K2-674
Paper 250 Pcs.



The Aygün chemical indicator strips are Class 6 emulating indicators designed for use in prevacuum steam sterilizers operating at 134 °C for 3,5 minutes or 121 °C for 15 minutes.

The Aygün chemical indicator strips integrate all the critical parameters of the steam sterilization cycle and test your sterilization processes according to these parameters (temperature, saturated steam and exposure time).

Simply place the indicator strip in window specially designed for emulating indicator or any desired location while loading the sterilizer.

After exposure to specific conditions, the liquid goes through a permanent color change (from pink to black) that indicates sterilization parameters have been met. If the color is not black, then it suggests inadequate sterilization. In that case, items must be resterilized (per hospital policy) with new/unused indicator strips.

The Aygün chemical indicator strips are suitable for use in any container system.

Once the indicator ink has changed color, there will be no reverse change. The ink contains no heavy metals.

The lamination of these indicators provides the maximum safety for direct contact with the indicator.

The Aygün chemical indicators are non-toxic and free of lead or heavy metals.

Meets the requirements for ISO 11140-1 standard.

Strips can be kept for documentation.

STANDARD MODEL

29

BIO-BARRIER MODEL

63

Polymer's PPSU Lids

97

WINDOW MODEL

119

B₃ Sterilizer MODEL

139

PLASMA MODEL

173

A1 MODEL

185

Dental, Mini, Special

205

BASKETS

223

Autolock Mechanism Emulating Indicator

243

ACCESSORIES

251

DISPOSAL STAMP



K2-717
40 x 35 x 9 mm
Requested number or letter must be informed during the order.



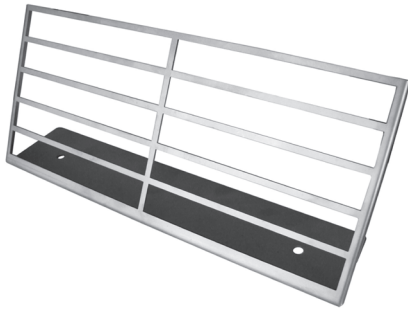
LABEL HOLDER



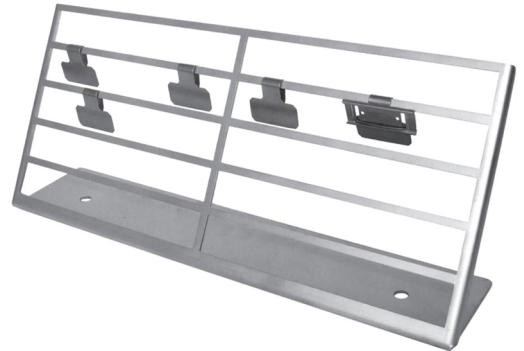
K2-716
50 x 35 x 13 mm
Holder for identification labels



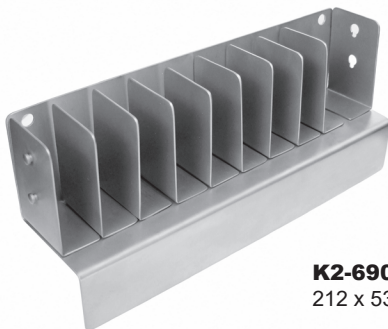
STORAGE STAND



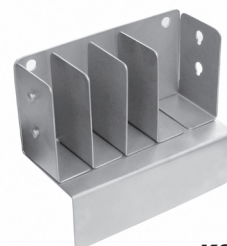
K2-691
390 x 85 x 153 mm



DISPENSER (for identification labels)



K2-690
212 x 53 x 92 mm

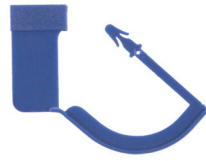


K2-680
108 x 53 x 92 mm

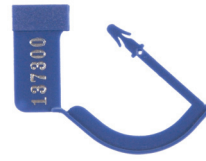
SECURITY SEAL



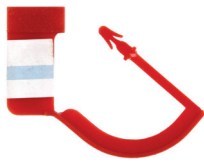
K2-663 Blue
100 pcs. with indicator.
made of plastic



K2-664 Blue
100 pcs. made of plastic



K2-661 Blue
100 pcs. with number.
made of plastic



K2-662 Red
100 pcs. with indicator.
made of plastic



K2-660 Red
100 pcs. made of plastic



K2-665 Red
100 pcs. with number.
made of plastic



AUTO LOCK MECHANISM



K1-900
(2 Pcs)



What is Auto Lock Mechanism?

Auto lock mechanism is a heat-sensitive automatic locking system developed in order to ease sterilization control by R&D department.

Modular auto lock system designed to be usable with different container systems which are belongs to different brands like shown below.

This system has been developed in accordance with the requirements of sterilization to be used in a steam autoclave for our container systems. Auto lock is a system designed in reusable property instead of disposable plastic products that are used as security locks in containers. The system has been tested in our own facilities 5000 cycles and has successfully passed all tests. Minimum expected life of the system is 5000 sterilizations. During this time system is usable without the need for any maintenance or service.

STANDARD MODEL	29
BIO-BARRIER MODEL	63
Polymer's PPSU Lids	97
WINDOW MODEL	119
B ₃ Barrier MODEL	139
PLASMA MODEL	173
A1 MODEL	185
Dental, Mini, Special	205
BASKETS	223
Autolock Machanism Emulating Indicator	243
ACCESSORIES	251

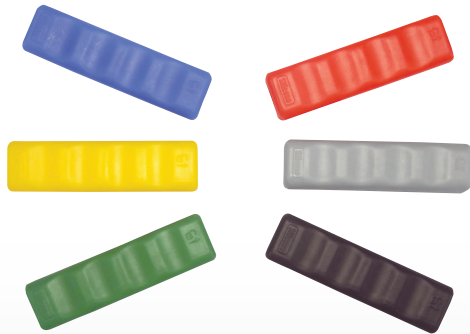


SILICONE HOSE

Silicone handle has available in six different colors



SILICONE HANDLE

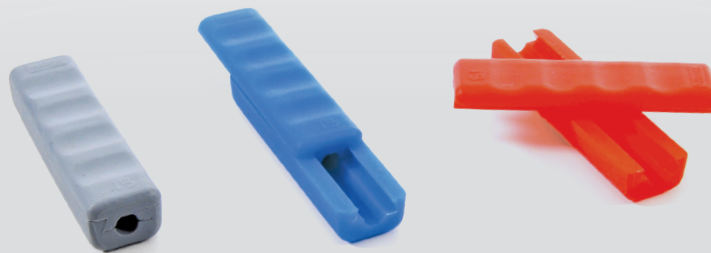


- K2-710** Red
- K2-711** Yellow
- K2-712** Green
- K2-713** Blue
- K2-714** Grey
- K2-715** Black

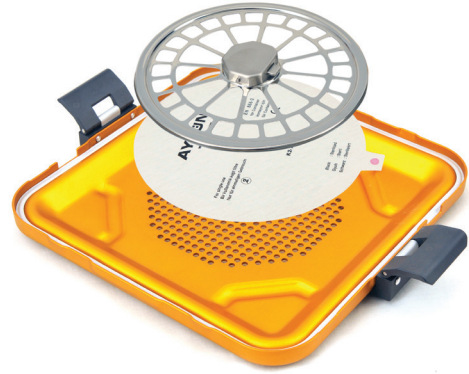


Silicone handle has available in six different colors and detachable by user.

Patent No: 200801401



STANDARD MODEL	29
BIO-BARRIER MODEL	63
Polymer's PPSU Lids	97
WINDOW MODEL	119
B ₃ Stirrer MODEL	139
PLASMA MODEL	173
A1 MODEL	185
Dental, Mini, Special	205
BASKETS	223
Autolock Mechanism Emulating Indicator	243
ACCESSORIES	251



PAPER FILTER

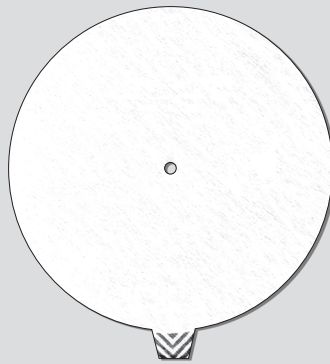


code **K2-740**

Diameter 184 mm

Single use 100 pcs with indicator. Aygun mark.

PAPER FILTER



code **K2-741**

Diameter 184 mm

Single use 100 pcs with indicator. No marking.

TEFLON FILTER



code **K2-742**

Diameter 194 mm

Number of sterilization cycle > 2000

TEFLON FILTER

(FOR B3 PTFE SYSTEM)



code **K2-745**

Diameter 90 mm

Number of sterilization cycle > 2000 to be used with K1-970



1/1



3/4



1/2



Extra Long Model



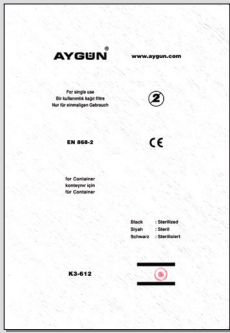
Extra Large Model



Large Dental Model

STANDARD MODEL	29
BIO-BARRIER MODEL	63
Polymer's PPSU Lids	97
WINDOW MODEL	119
B ₃ Barrier MODEL	139
PLASMA MODEL	173
A1 MODEL	185
Dental, Mini, Special	205
BASKETS	223
Autolock Mechanism Emulating Indicator	243
ACCESSORIES	251

PAPER FILTER

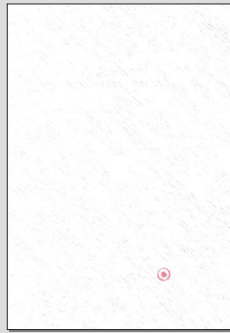


code **K3-612**

Dimension 165 x 235 mm

Single use 100 pcs with indicator. Aygun mark.

PAPER FILTER

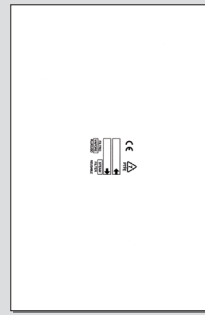


code **K3-615**

Dimension 165 x 235 mm

Single use 100 pcs with indicator. No marking.

TEFLON FILTER

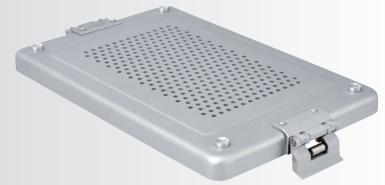


code **K2-743**

Dimension 150 x 233 mm

Number of sterilization cycle > 2000

Dental Model



PAPER FILTER



code **K2-760**

Dimension 230 x 120 mm

Single use 100 pcs with indicator. Aygun mark.

PAPER FILTER

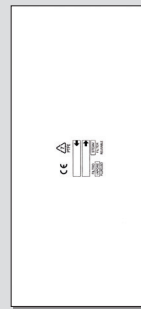


code **K2-761**

Dimension 230 x 120 mm

Single use 100 pcs with indicator. No marking.

TEFLON FILTER



code **K2-744**

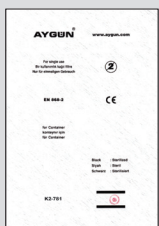
Dimension 215 x 100 mm

Number of sterilization cycle > 2000

Mini Model



PAPER FILTER

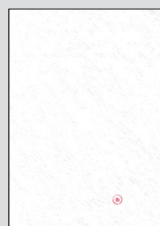


code **K2-781**

Dimension 130 x 130 mm

Single use 100 pcs with indicator. Aygun mark.

PAPER FILTER

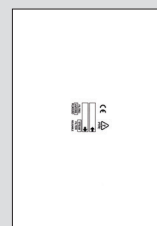


code **K2-780**

Dimension 130 x 130 mm

Single use 100 pcs with indicator. No marking.

TEFLON FILTER

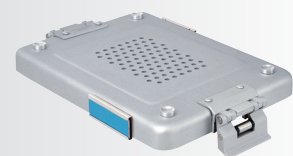


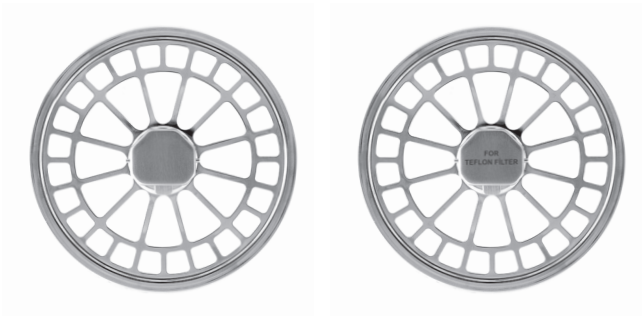
code **K2-782**

Dimension 130 x 130 mm

Number of sterilization cycle > 2000

1/2 Dental Model





code **K2-720**

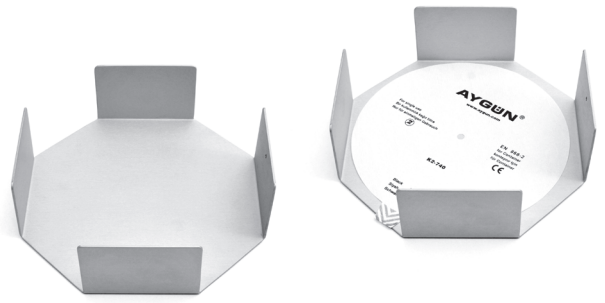
Diameter 186 mm

Filter Retainer,
for 1/1, 3/4, 1/2, Extra large,
Extra long, Large dental

code **K2-721**

Diameter 186 mm

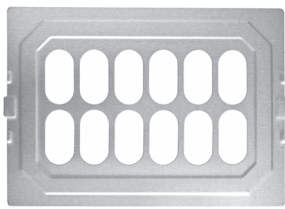
For PTFE Teflon filter
for 1/1, 3/4, 1/2, Extra large,
Extra long, Large dental



code **K2-730**

Dimension 200 x 200 x 64 mm

Filter Dispenser



code **K2-1715**

Dimension 247 x 172 mm

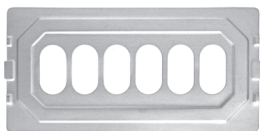
Filter Retainer,
for Dental model



code **K2-1708**

Dimension 250 x 177 x 40 mm

Filter Dispenser



code **K2-1716**

Dimension 243 x 120 mm

Filter Retainer,
for Mini model



code **K2-1709**

Dimension 250 x 127 x 53 mm

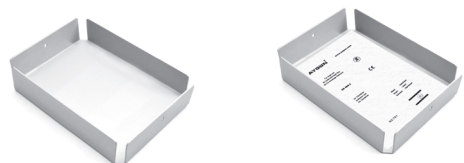
Filter Dispenser



code **K2-1717**

Dimension 162 x 144 mm

Filter Retainer,
for 1/2 Dental model

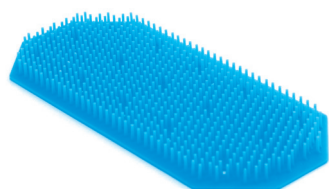
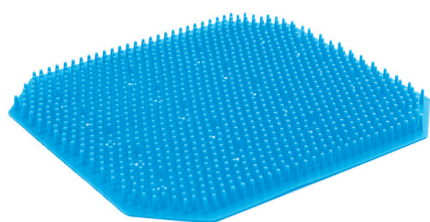
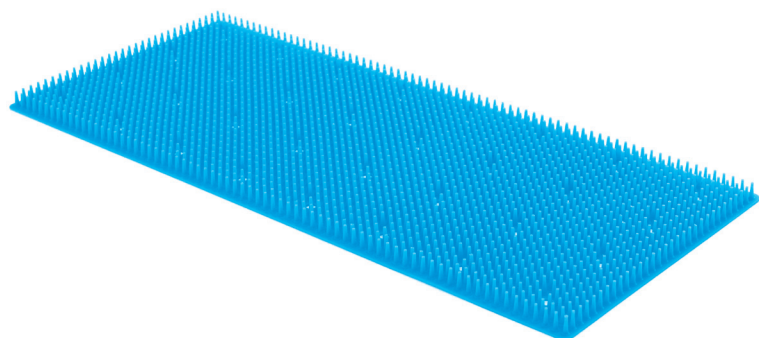


code **K2-1710**

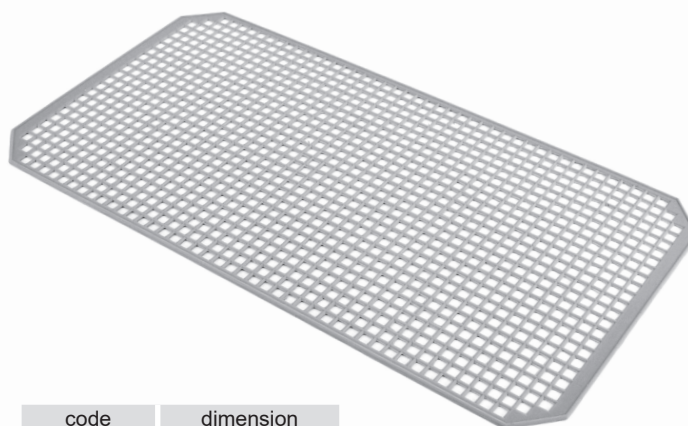
Dimension 169 x 151 x 53 mm

Filter Dispenser

SILICONE MATS



code	dimension
K2-519	160 x 135 mm
K2-520	275 x 125 mm
K2-521	250 x 235 mm
K2-522	340 x 230 mm (2 pcs)
K2-523	300 x 300 mm
K2-524	380 x 230 mm
K2-525	440 x 230 mm
K2-526	520 x 230 mm
K2-527	230 x 220 mm
K2-528	475 x 230 mm
K2-529	260 x 180 mm
K2-532	280 x 200 mm



code	dimension
K2-530	250 x 240 mm
K2-531	485 x 250 mm
K2-533	534 x 247 mm
K2-534	395 x 245 mm
K2-535	527 x 335 mm
K2-536	658 x 247 mm

Silicone Mesh Mat,
Enables surgical instruments to be stored without slip and dry well.

STANDARD
MODEL
29

BIO-BARRIER
MODEL
63

Polymer's PPSU
Lids
97

WINDOW
MODEL
119

B₃ Barrier
MODEL
139

PLASMA
MODEL
173

A1
MODEL
185

Dental, Mini,
Special
MODEL
205

BASKETS
MODEL
223

Autolock Mechanism
Emulating Indicator
MODEL
243

ACCESSORIES
MODEL
251



code	outside dimension
K3-1090	505 x 250 x 125 mm

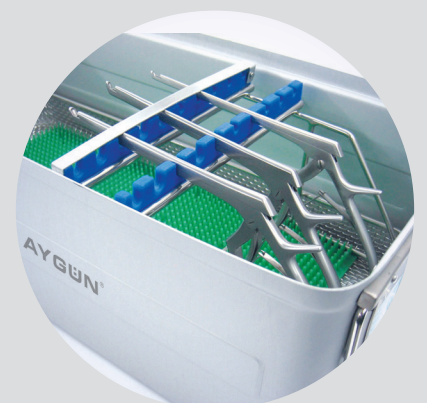
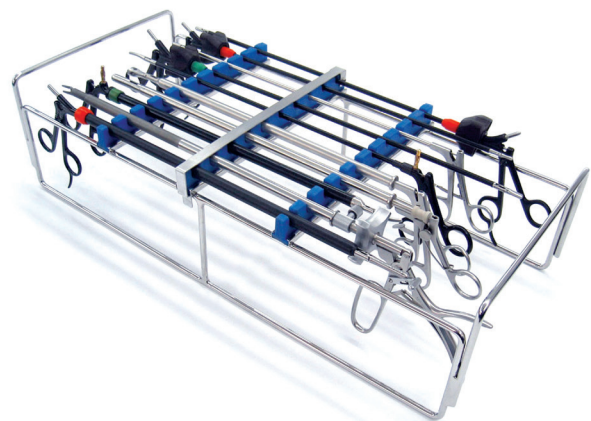
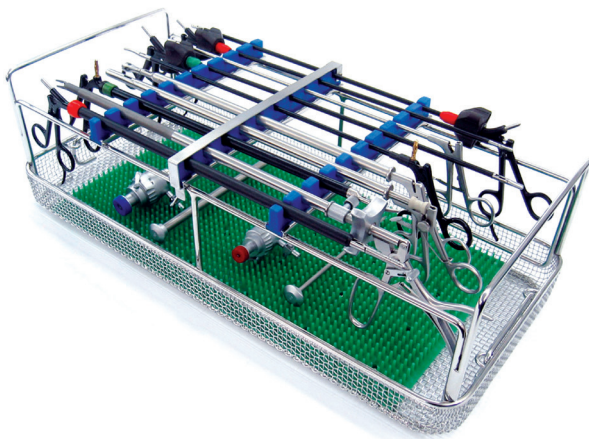
Rack, for endoscopy

- Holds 10 endoscopic instruments
- Fits into a 1/1 size 20 cm deep container
- Wire basket 1/1 50 mm
- Container 1/1 200 mm
- Silicone mat 520 x 230 mm

code	outside dimension
K3-1093	550 x 250 x 130 mm

Rack, for endoscopy

- Holds 10 endoscopic instruments
- Fits into a Extra Long size 18 cm deep container
- Wire basket Extra Long 50 mm
- Container Extra Long 180 mm
- Silicone mat 340x230 (2pcs)



STANDARD MODEL
29

BIO-BARRIER MODEL
63

Polymer's PPSU Lids
97

WINDOW MODEL
119

B₃ Barrier MODEL
139

PLASMA MODEL
173

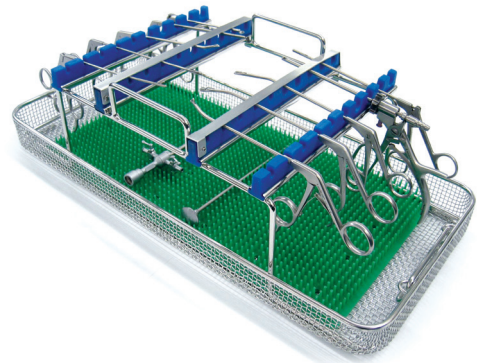
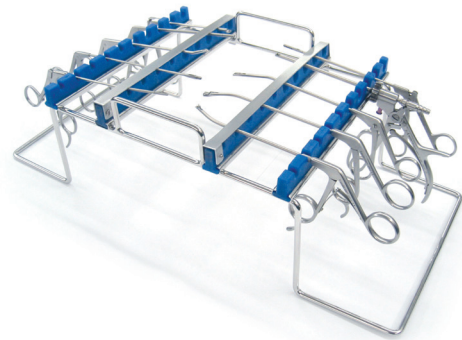
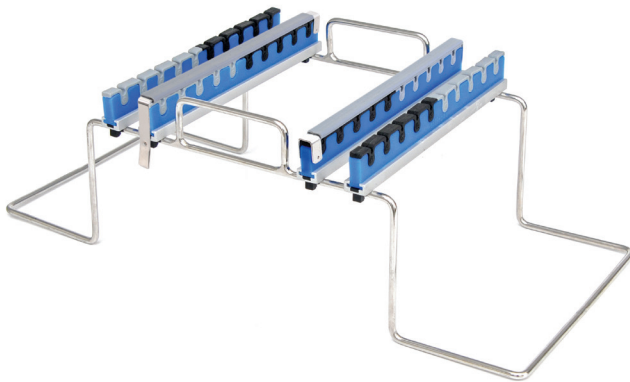
A1 MODEL
185

Dental, Mini, Special
205

BASKETS
223

Autolock Mechanism Emulating Indicator
243

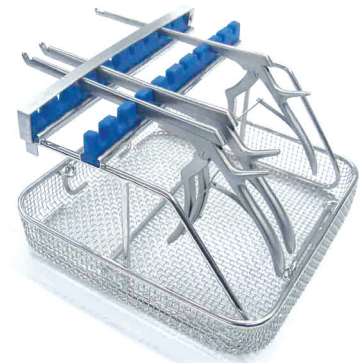
ACCESSORIES
251



code	outside dimension
K3-1092	515 x 250 x 165 mm

Rack, for arthroscopy

- Holds 20 arthroscopy punches
- Fits into a 1/1 size 20 cm deep container
- Wire basket 1/1 50 mm
- Container 1/1 200 mm
- Silicone mat 440 x 230 mm

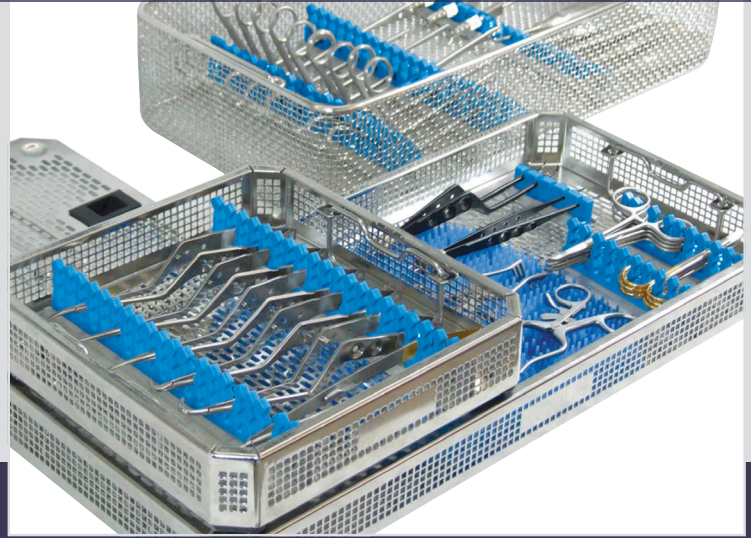
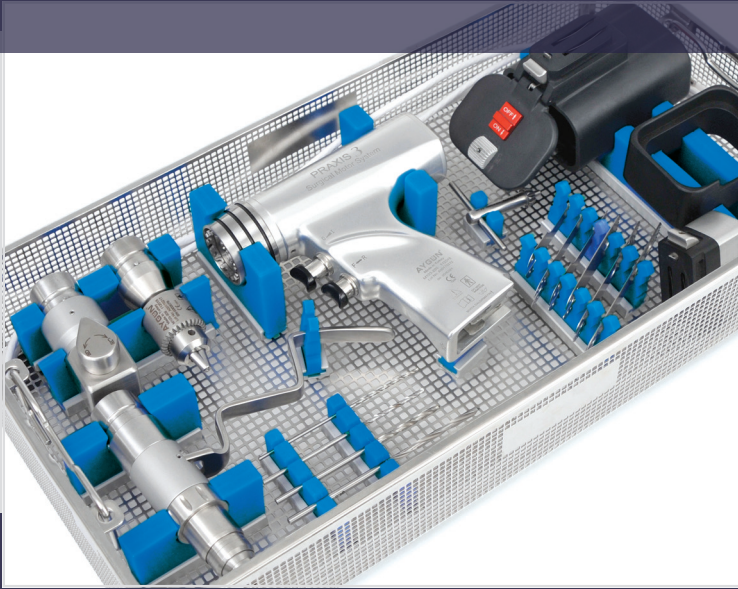


code	outside dimension
K3-1094	220 x 250 x 160 mm

Rack, for Kerrison

- Holds 10 Kerrison punches
- Fits into a 1/2, 1/1 20 cm and Extra Long size 18 cm deep container
- Wire basket 1/2 50 mm
- Wire basket 1/1 50 mm
- Wire basket Extra long 50 mm
- Container 1/2 200 mm
- Container 1/1 200 mm
- Container Extra long 180 mm

SILICONE FIXATION SYSTEM



RAIL



code	length
K1-1601	250 x 9 mm
K1-1602	158 x 9 mm
K1-1603	123 x 9 mm
K1-1604	97 x 9 mm
K1-1605	73 x 9 mm
K1-1606	23,5 x 9 mm

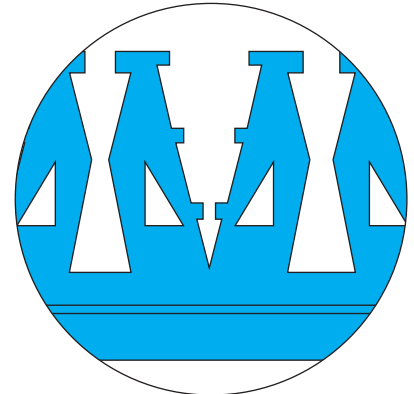
Can be manufactured in any size demanded

code	image	description
K1-680-02 (1 piece)		Kep nut
K1-680-03 (1 piece)		Screw

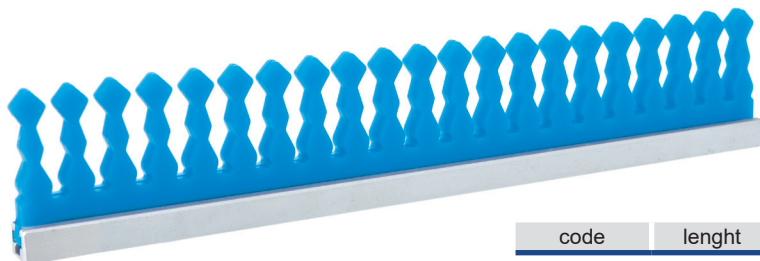


With rail, screw and nut

code	length	height
K12-100	250 mm	45 mm
K12-101	152 mm	45 mm
K12-102	125 mm	45 mm
K12-145	97 mm	45 mm

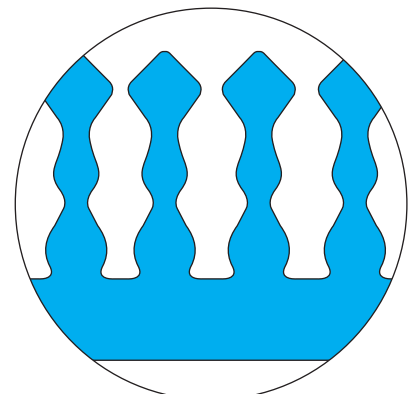


Actual Size



With rail, screw and nut

code	length	height
K12-109	238 mm	45 mm
K12-110	158 mm	45 mm
K12-111	112 mm	45 mm
K12-148	77 mm	45 mm

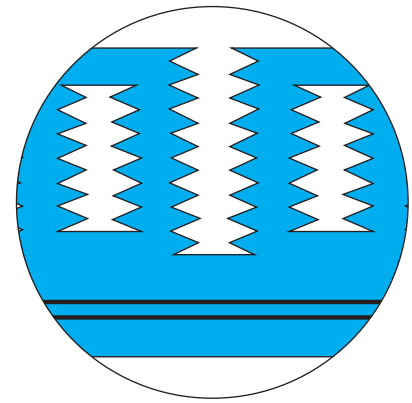


Actual Size



code	length	height
K12-106	238 mm	45 mm
K12-107	150 mm	45 mm
K12-108	119 mm	45 mm
K12-147	87 mm	45 mm

With rail, screw and nut

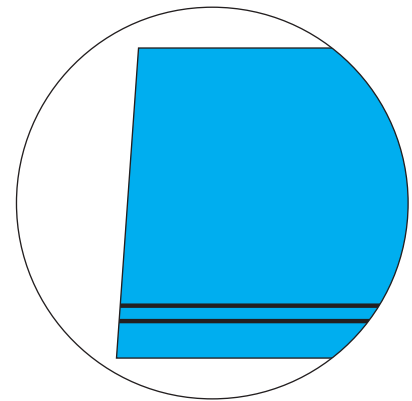


Actual Size

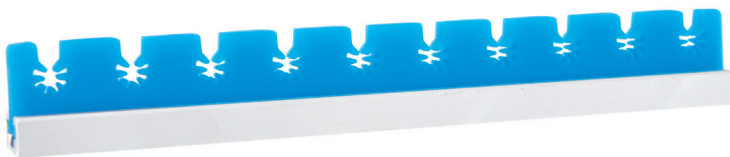


code	length	height
K12-103	240 mm	45 mm
K12-104	150 mm	45 mm
K12-105	120 mm	45 mm
K12-146	90 mm	45 mm

With rail, screw and nut

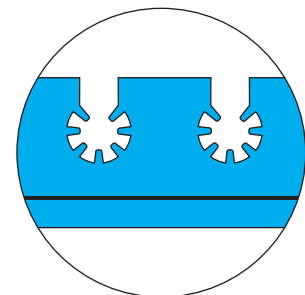


Actual Size



code	length	height
K12-112	178 mm	24 mm

Instruments holder, from Ø 3 to 8 mm
With rail, screw and nut

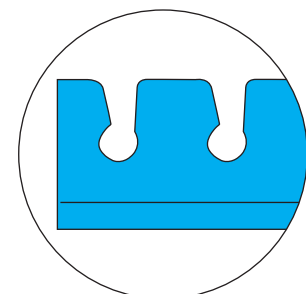


Actual Size



code	length	height
K12-113	73 mm	24 mm

Instruments holder,
Ø 5 mm
With rail, screw and nut



Actual Size

STANDARD
MODEL
29

BIO-BARRIER
MODEL
63

Polymer's PPSU
Lids
97

WINDOW
MODEL
119

B₃^{Barrier}
MODEL
139

PLASMA
MODEL
173

A1
MODEL
185

Dental, Mini,
Special
205

BASKETS
223

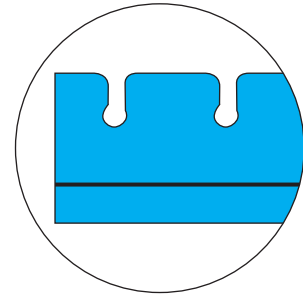
Autolock Mechanism
Emulating Indicator
243

ACCESSORIES
251



code	length	height
K12-114	73 mm	24 mm

Instruments holder,
Ø 3 mm
With rail, screw and nut

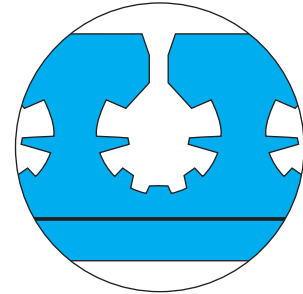


Actual Size

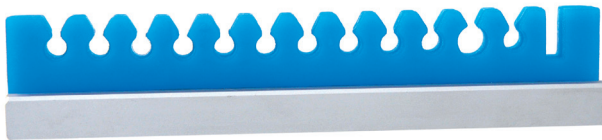


code	length	height
K12-115	178 mm	34 mm

Instruments holder, from Ø 3 to 15 mm
With rail, screw and nut

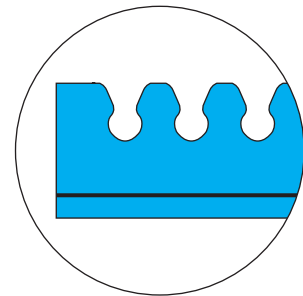


Actual Size

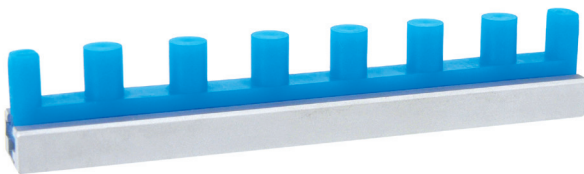


code	length	height
K12-116	121 mm	22 mm

With rail, screw and nut

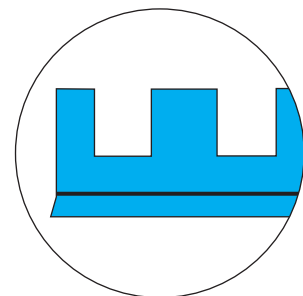


Actual Size



code	length	height
K12-117	123 mm	22 mm

With rail, screw and nut

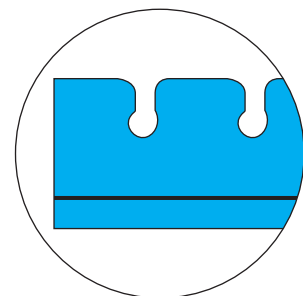


Actual Size



code	length	height
K12-124	178 mm	24 mm

Instruments holder, from Ø 3 mm
With rail, screw and nut

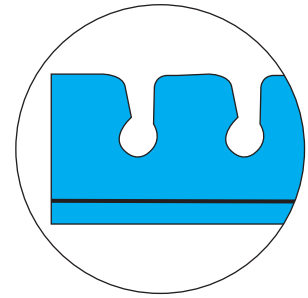


Actual Size



code	length	height
K12-125	178 mm	24 mm

Instruments holder, from Ø 5 mm
With rail, screw and nut

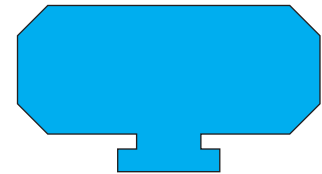


Actual Size

STANDARD MODEL	29
BIO-BARRIER MODEL	63
Polymers PPSU Lids	97
WINDOW MODEL	119
B ₃ Barrier MODEL	139
PLASMA MODEL	173
A1 MODEL	185
Dental, Mini, Special	205
BASKETS	223
Autolock Mechanism Emulating Indicator	243
ACCESSORIES	251



code	length	height
K12-142	40 mm	25 mm

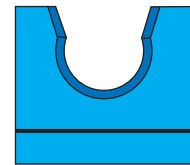


Actual Size



code	length	height
K12-126	23.5 mm	25 mm

Ø 10,5 mm
With rail, screw and nut

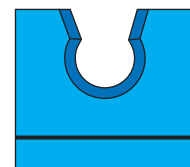


Actual Size



code	length	height
K12-127	23.5 mm	25 mm

Ø 8 mm
With rail, screw and nut

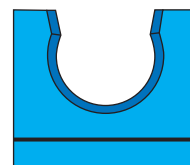


Actual Size



code	length	height
K12-128	23.5 mm	25 mm

Ø 13 mm
With rail, screw and nut

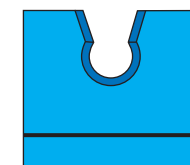


Actual Size



code	length	height
K12-129	23.5 mm	25 mm

Ø 5 mm
With rail, screw and nut

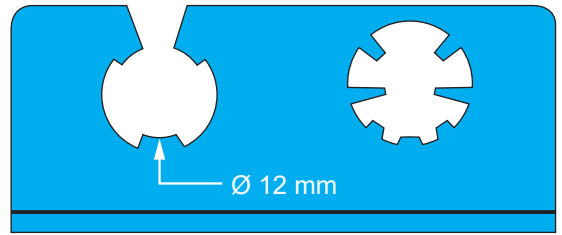


Actual Size

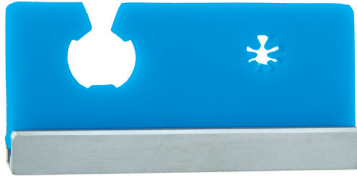


code	length	height
K12-130	72 mm	34 mm

Endoscope holder, double
One side Ø 12 mm open
One side from Ø 3 to Ø 15 mm closed
With rail, screw and nut

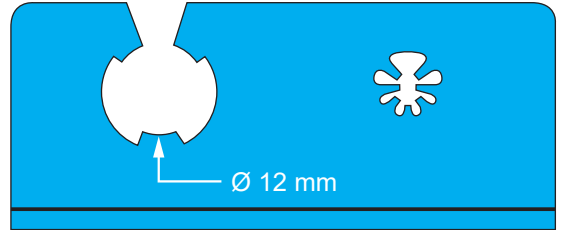


Actual Size



code	length	height
K12-141	72 mm	34 mm

Endoscope holder, double
One side Ø 12 mm open
One side from Ø 3 to Ø 8 mm closed
With rail, screw and nut

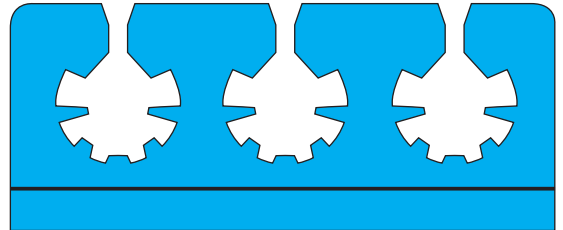


Actual Size

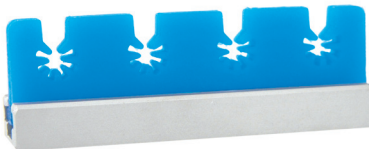


code	length	height
K12-131	72 mm	34 mm

Instruments holder
from Ø 3 to Ø 15 mm
With rail, screw and nut

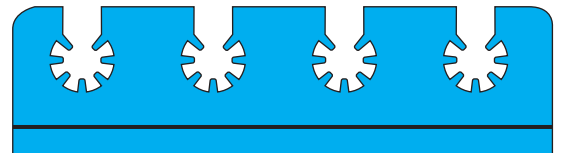


Actual Size



code	length	height
K12-132	72 mm	24 mm

Instruments holder,
from Ø 3 to Ø 8 mm
With rail, screw and nut

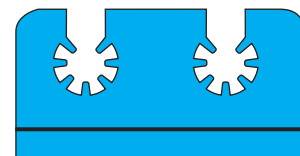


Actual Size



code	length	height
K12-133	38 mm	24 mm

Endoscope holder, double
one side from Ø 3 to Ø 8 mm
With rail, screw and nut

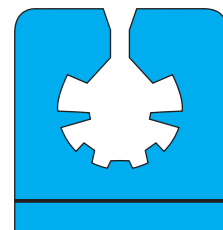


Actual Size



code	length	height
K12-134	28 mm	34 mm

Endoscope holder, single
one side Ø 12 mm open
one side from Ø 3 to Ø 15 mm
With rail, screw and nut

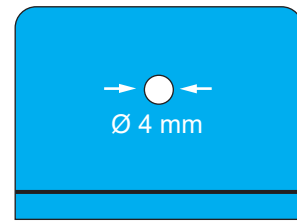


Actual Size



code	length	height
K12-135	38 mm	33 mm

Endoscope holder, Ø 4 mm closed
With rail, screw and nut

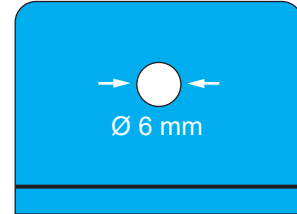


Actual Size



code	length	height
K12-136	38 mm	33 mm

Endoscope holder, Ø 6 mm closed
With rail, screw and nut

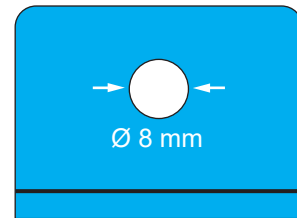


Actual Size



code	length	height
K12-137	38 mm	33 mm

Endoscope holder, Ø 8 mm closed
With rail, screw and nut

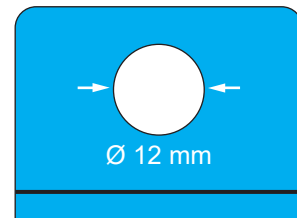


Actual Size

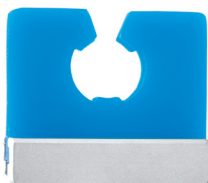


code	length	height
K12-138	38 mm	33 mm

Endoscope holder, Ø 12 mm closed
With rail, screw and nut

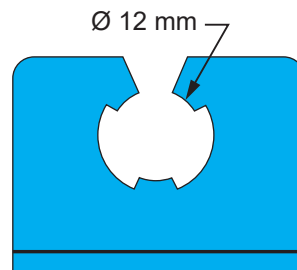


Actual Size

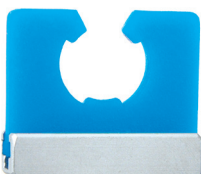


code	length	height
K12-139	38 mm	33 mm

Endoscope holder, Ø 12 mm open
With rail, screw and nut

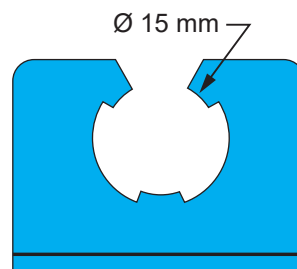


Actual Size



code	length	height
K12-140	38 mm	33 mm

Endoscope holder, Ø 15 mm open
With rail, screw and nut



Actual Size

STANDARD MODEL
29

BIO-BARRIER MODEL
63

Polymer's PPSU Lids
97

WINDOW MODEL
119

B₃ Barrier MODEL
139

PLASMA MODEL
173

A1 MODEL
185

Dental, Mini, Special
205

BASKETS
223

Autolock Mechanism Emulating Indicator
243

ACCESSORIES
251



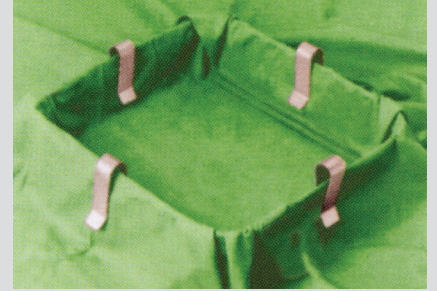
K2-650
Holding pin for divider



K2-651
Holding pin for instruments



K2-588
Fixation clamp

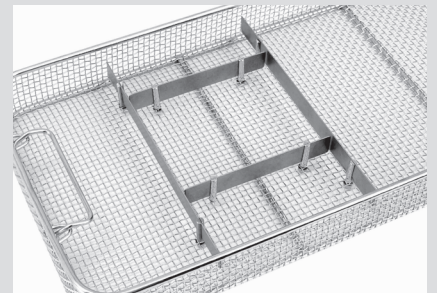
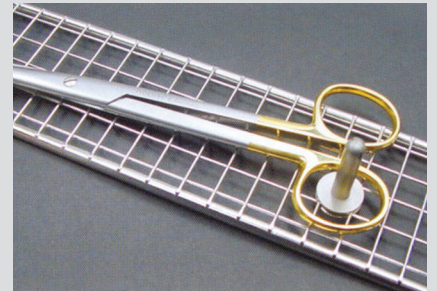


K2-645
DIVIDER
50 x 20 mm

K2-646
DIVIDER
130 x 20 mm

K2-647
DIVIDER
225 x 20 mm

K2-648
DIVIDER
460 x 20 mm



FIXATION CLAMP



K2-580
Ø 7 - 12 mm



K2-581
Ø 12 - 16 mm



K2-582
Ø 16 - 26 mm



K2-583
Ø 26 - 36 mm



K2-584
Ø 36 - 45 mm





code	outside dimension
K8-508	98 x 43 x 44 mm

Rack for 24 burs with shanks Ø 2.35 mm



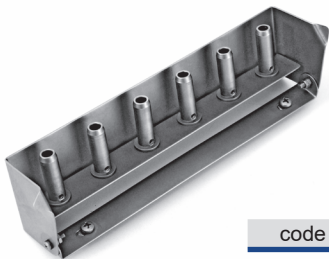
code	outside dimension
K8-509	163 x 103 x 40 mm

Rack for 15 pcs of instruments



code	outside dimension
K8-511	218 x 22 x 54 mm

Rack for 12 pcs of instruments



code	outside dimension
K8-490	218 x 45 x 52 mm

Tilttable holding device for 6 micro heads



STANDARD
MODEL
29



BIO-BARRIER
MODEL
63

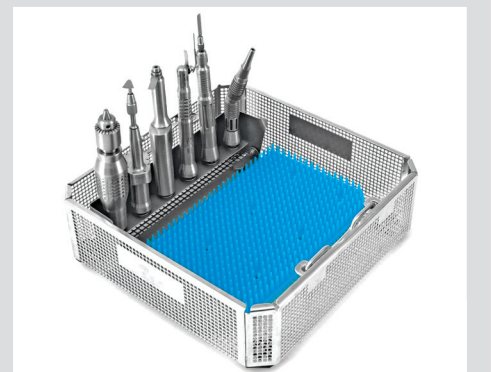


Polymer's PPSU
Lids
97

WINDOW
MODEL
119

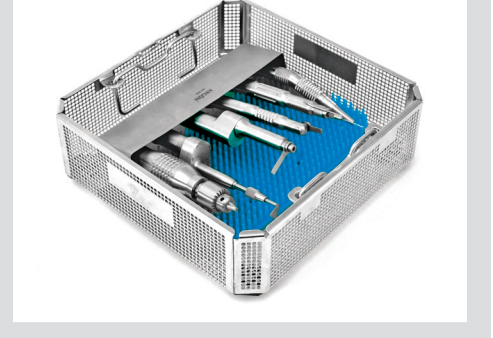
B₃
Barrier
MODEL
139

PLASMA
MODEL
173



A1
MODEL
185

Dental, Mini,
Special
MODEL
205



BASKETS
MODEL
223

Autolock Mechanism
Emulating Indicator
MODEL
243

ACCESSORIES
MODEL
251



code	outside dimension
K2-600	40 x 5 x 18 mm

DIVIDER (use with K2-601 and K2-602)



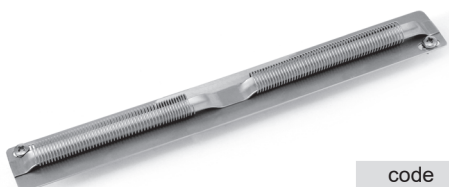
code	outside dimension
K2-601	230 x 26 mm
K2-602	470 x 26 mm

Sliding rails with securing screws



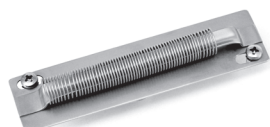
code	outside dimension
K2-604	230 x 26 mm
K2-605	470 x 26 mm

Limiting bar, with security screws

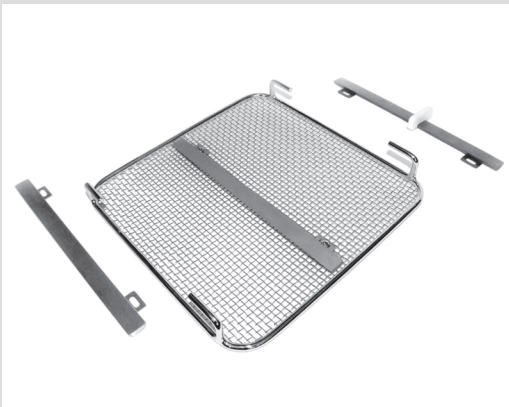


code	outside dimension
K2-607	233 x 30 mm

Spiral holding device



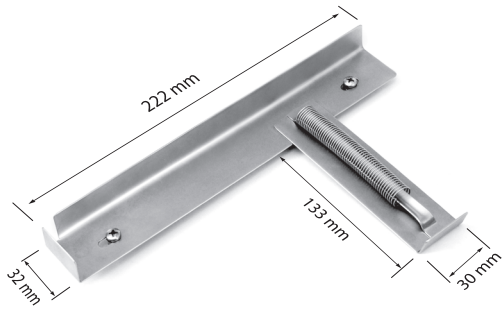
code	outside dimension
K2-609	116 x 30 mm





code	outside dimension
K2-615	112 x 18 mm
K2-616	172 x 18 mm
K2-617	232 x 18 mm
K2-618	472 x 18 mm

Limiting bar



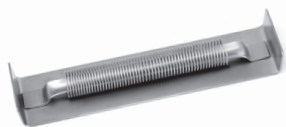
code
K2-620

Spiral holding



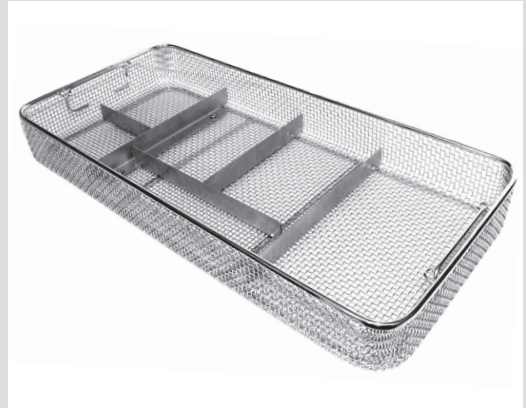
code	outside dimension
K2-622	223 x 30 mm

Spiral holding



code	outside dimension
K2-625	126 x 30 mm

Spiral holding



STANDARD
MODEL
29

BIO-BARRIER
MODEL
63

Polymer's PPSU
Lids
97

WINDOW
MODEL
119

B₃^{ster}
MODEL
139

PLASMA
MODEL
173

A1
MODEL
185

Dental, Mini,
Special
205

BASKETS
223

Autolock Mechanism
Emulating Indicator
243

ACCESSORIES
251

SPREY OIL



code
K8-510

SILICONE GASKETS FOR LIDS



code
K3-1000

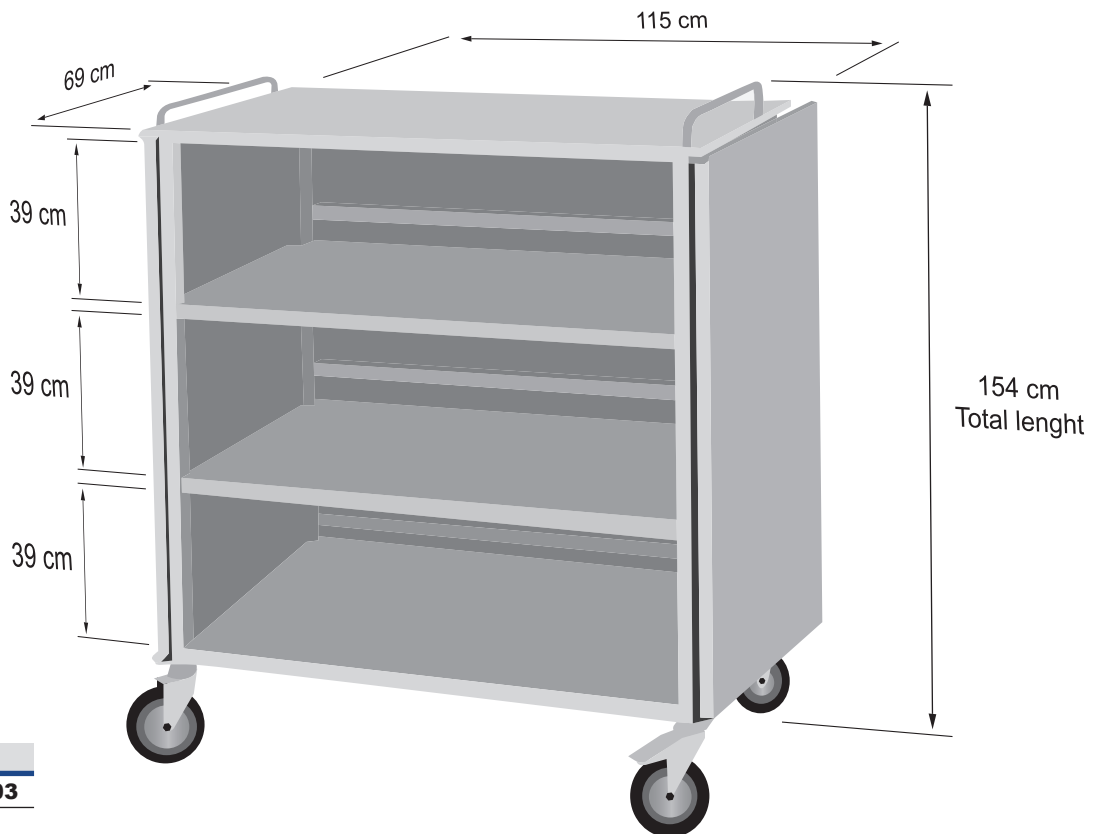
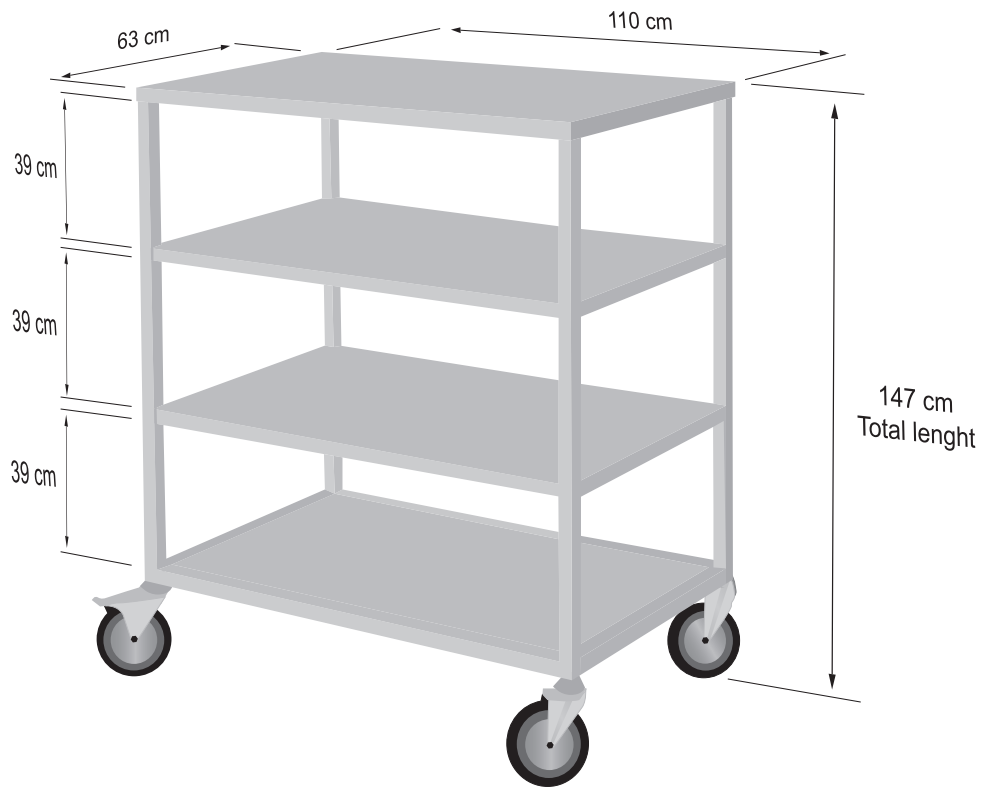
Silicone adhesive with silicone gun
310 ml ± 5%



code	model	size
K3-948	Large Dental silicone gasket	118 cm
K3-949	1/2 Dental silicone gasket	72 cm
K3-950	Mini silicone gasket	77 cm
K3-951	Dental silicone gasket	89 cm
K3-952	Flat silicone gasket	101 cm
K3-953	1/2 silicone gasket	101 cm
K3-954	3/4 silicone gasket	136 cm
K3-955	1/1 silicone gasket	158 cm
K3-956	Extra Large silicone gasket	180 cm
K3-957	Extra Long silicone gasket	185 cm
K3-958	Endo silicone gasket	130 cm

For mounting, K3-1000 silicone adhesive is used

TROLLEYS



STANDARD MODEL	29
BIO-BARRIER MODEL	63
Polymer's PPSU Lids	97
WINDOW MODEL	119
B ₃ Steril MODEL	139
PLASMA MODEL	173
A1 MODEL	185
Dental, Mini, Special	205
BASKETS	223
Autolock Mechanism Emulating Indicator	243
ACCESSORIES	251

GOODS COMPATIBILITY TABLE

DENTAL MODEL CONTAINER



		K6-1860	K6-1861	K6-1862	K6-1865	K6-1866	K6-1867	K6-1880	K7-1880	K3-1070	K3-611	K3-609	K3-610	K2-529	K3-612	K3-615	K2-743	K2-1660	K2-1661	K2-1662		
DENTAL MODEL	K6-1800,1806				✓			✓	✓				✓	✓	✓	✓	✓	✓	✓	✓	✓	
	K6-1806,1811					✓		✓	✓	✓	✓	✓	✓	✓	✓	✓	✓	✓	✓	✓	✓	
	K6-1812,1817						✓	✓	✓	✓	✓	✓	✓	✓	✓	✓	✓	✓	✓	✓	✓	
	K6-1820,1825	✓						✓					✓	✓	✓	✓	✓	✓	✓	✓	✓	
	K6-1826,1831		✓						✓	✓	✓	✓	✓	✓	✓	✓	✓	✓	✓	✓	✓	✓
	K6-1832,1837			✓					✓		✓	✓	✓	✓	✓	✓	✓	✓	✓	✓	✓	✓

MINI MODEL CONTAINER



		K6-1960	K6-1961	K6-1962	K6-1965	K6-1966	K6-1967	K6-1980	K3-1073	K2-993	K2-990	K2-991	K2-992	K2-520	K2-760	K2-761	K2-744	K2-1650	
MINI MODEL	K6-1900,1906				✓			✓			✓	✓	✓	✓	✓	✓	✓	✓	✓
	K6-1906,1911					✓		✓	✓	✓	✓	✓	✓	✓	✓	✓	✓	✓	✓
	K6-1912,1917						✓	✓	✓	✓	✓	✓	✓	✓	✓	✓	✓	✓	✓
	K6-1920,1925	✓						✓			✓	✓	✓	✓	✓	✓	✓	✓	✓
	K6-1926,1931		✓					✓	✓	✓	✓	✓	✓	✓	✓	✓	✓	✓	✓
	K6-1932,1937			✓				✓	✓	✓	✓	✓	✓	✓	✓	✓	✓	✓	✓