

STERILE CONTAINER SYSTEMS B3 MODEL



1/1 FULL SIZE



3/4 QUARTER SIZE



1/2 HALF SIZE



EXTRA LARGE SIZE



EXTRA LONG SIZE

Aygün B3 model sterilization container systems are designed to provide different filtering mechanisms in a single sterilization container according to user preference. Without buying a new lid, the users are able to change the filtering system on the lid. Aygün B3 model sterilization container systems can be used with 3 different filtering mechanisms.

PTFE system: This filtering mechanism is used with 2000 cycles PTFE Teflon Filter which can be changed by the user easily like in standard model filter-based sterilization containers. The filter used in this system is provided only by Aygün which is placed in a cassette.

Valve system: Valve system is modernized new model of Aygün Bio-Barrier systems and has the same running principal. This system works with mechanic valve with positive and negative pressure occurred during sterilization in autoclave and can be used minimum 5000 cycles.

Bio-Stop system: The Bio-Stop system is a flow inhibition system based on a principle discovered by Louis Pasteur. With a separation efficiency of 99.99 %, it offers significantly better protection against microbes and particles. This system can be used minimum 5000 cycles.

Aygün B3 model sterilization container systems are manufactured as five different length, width and height. All models and sizes have specific baskets and accessories which can be viewed in following parts. Modular auto lock mechanism (thermo lock) promising sterility assurance and indicator window providing visibility of the indicator card result by visual control without opening the lid are also available for this sterilization container model.



STERILE CONTAINER SYSTEMS



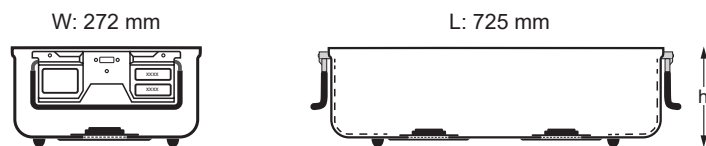
***B*₃ Carrier Container System**

PTFE \rightleftharpoons Valve \rightleftharpoons Biostop

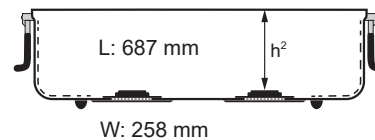
» Extra Long Size

EXTRA LONG BOX (*B³*_{arrier} model)

outside dimension



inside dimension



Specifications ➔		PTFE	VALVE	BIOSTOP	BIOSTOP Aluminium
height					
h 140 mm h² 69 mm		K8-2000P	K8-2000V	K8-2000B	K8-2000BA
h 200 mm h² 131 mm		K8-2001P	K8-2001V	K8-2001B	K8-2001BA

PTFE pps

code **K1-970**



weight: 151 g

VALVE pps

code **K1-980**



weight: 163 g

BIOSTOP pps

code **K1-990**



weight: 281 g

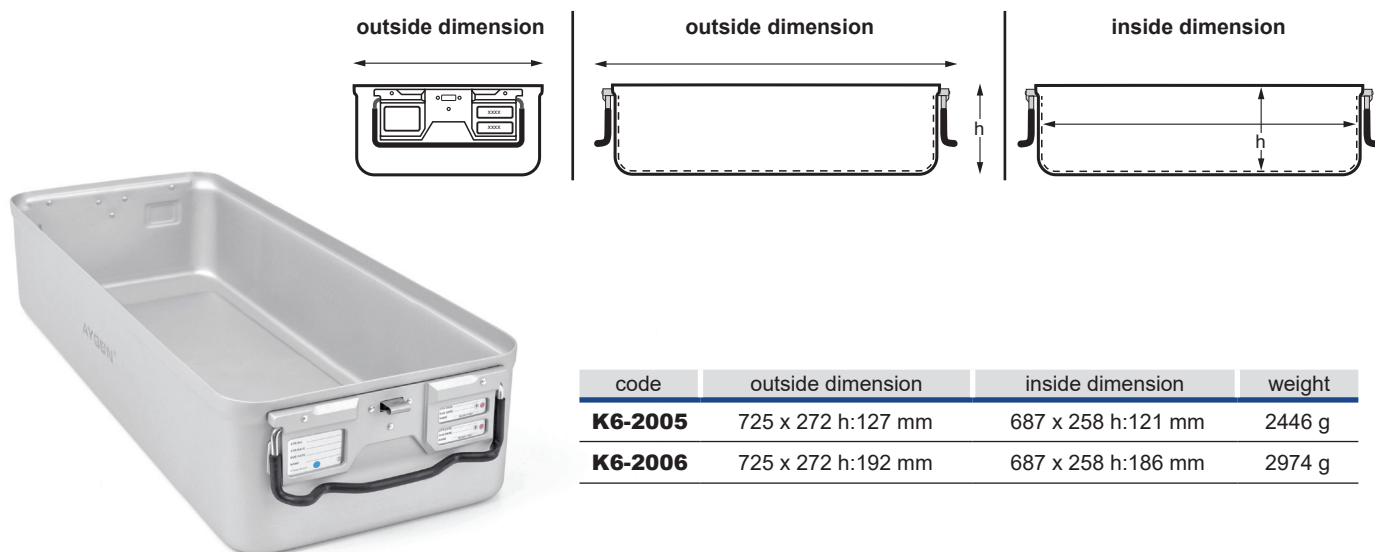
BIOSTOP aluminium

code **K1-990A**



weight: 434 g

EXTRA LONG BOX (non perforated)



code	outside dimension	inside dimension	weight
K6-2005	725 x 272 h:127 mm	687 x 258 h:121 mm	2446 g
K6-2006	725 x 272 h:192 mm	687 x 258 h:186 mm	2974 g

LID (B³ARRIER model)



	PTFE	VALVE	BIOSTOP
	K8-2120P	K8-2120V	K8-2120B
	K8-2121P	K8-2121V	K8-2121B
	K8-2122P	K8-2122V	K8-2122B
	K8-2123P	K8-2123V	K8-2123B
	K8-2124P	K8-2124V	K8-2124B
	K8-2125P	K8-2125V	K8-2125B
	weight 1386 g	weight 1810 g	weight 2047 g

BIOSTOP
Aluminium

K8-2120BA
K8-2121BA
K8-2122BA
K8-2123BA
K8-2124BA
K8-2125BA
weight 2303 g



PTFE pps

code **K1-970**



weight: 151 g

VALVE pps

code **K1-980**



weight: 163 g

BIOSTOP pps

code **K1-990**



weight: 281 g

BIOSTOP aluminium

code **K1-990A**



weight: 434 g

STANDARD
MODEL
29

BIO-BARRIER
MODEL
63

Polymers PPSU
Lids
97

WINDOW
MODEL
119

B³ARRIER
MODEL
139

PLASMA
MODEL
173

A1
MODEL
185

Dental, Mini,
Special
205

BASKETS
223

Autolock Mechanism
Emulating Indicator
243

ACCESSORIES
251

BASKET MADE FROM STAINLESS STEEL WIRE MESH

WIRE BASKET



code	outside dimension
K2-1801	665 x 250 h:50 mm
K2-1802	665 x 250 h:70 mm
K2-1803	665 x 250 h:100 mm



WIRE BASKET WITH LID



code	outside dimension
K3-1804	665 x 250 h:55 mm
K3-1805	665 x 250 h:75 mm
K3-1806	665 x 250 h:105 mm
K3-1807	ONLY LID, for baskets



IDENTIFICATION (aluminium)

LABEL HOLDER



code	color
K2-560	Red
K2-561	Blue
K2-562	Green
K2-563	Yellow
K2-564	Grey
K2-565	Black

LABELS



code	color
K2-570	Red
K2-571	Blue
K2-572	Green
K2-573	Yellow
K2-574	Grey
K2-575	Black

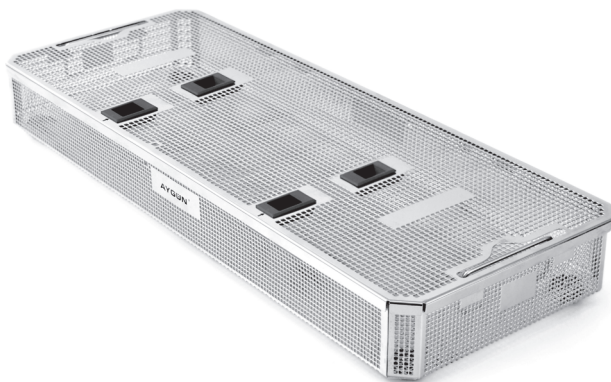
Coloured identification labels
Engraved to your specification



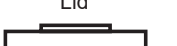


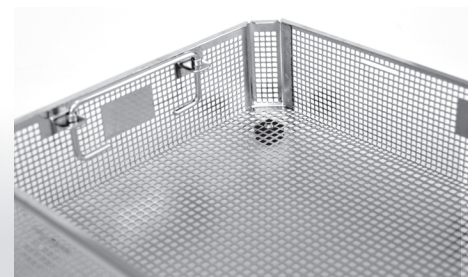
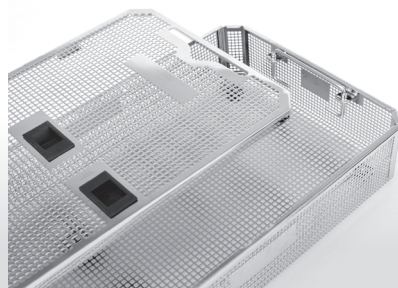
➡ Grey coloured recommended for use in Sterrad.
Color fading By effect of Hydrogen Peroxide Gas Plasma on other colors.

BASKET MADE FROM STAINLESS STEEL SHEET

BASKET (with stand)



	code	outside dimension
 Box and Lid	K3-715	671 x 259 h:44 mm
	K3-716	671 x 259 h:64 mm
	K3-717	671 x 259 h:84 mm
	K3-718	671 x 259 h:114 mm
 Box	K3-711	665 x 253 h:40 mm
	K3-712	665 x 253 h:60 mm
	K3-713	665 x 253 h:80 mm
	K3-714	665 x 253 h:110 mm
 Lid	K3-710	ONLY LID, for baskets



➤ The baskets which are without lid and less than 44 mm in height do not include the handles while the ones with lid include the handles.

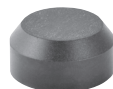
STAND



code	height
K3-767	20 mm



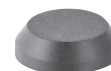
STAND



code	height
K3-768	10 mm



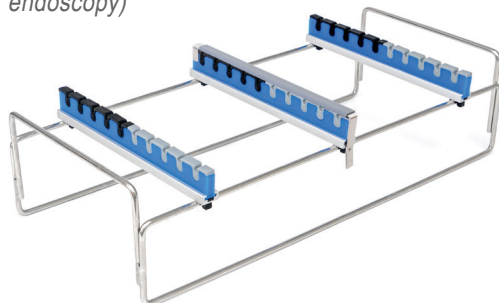
STAND



code	height
K3-766	5 mm



RACK (for endoscopy)



K3-1093

550 x 250 x 130 mm
(1 pcs)

- Holds 10 endoscopic instruments
- Fits into a Extra Long size 18 cm deep container
- Wire basket Extra Long 50 mm
- Container Extra Long 180 mm
- Silicone mat 340x230 (2pcs)

RACK (for kerrison)



K3-1094

220 x 250 x 160 mm
(2 pcs)

- Holds 10 kerrison punches
- Fits into a 1/2, 1/1 20 cm and Extra Long size 18 cm deep container
- Wire basket 1/2 50 mm
- Wire basket 1/1 50 mm
- Container 1/2 200 mm
- Container 1/1 200 mm
- Wire basket Extra long 50 mm
- Container Extra long 180 mm

DIVIDERS



K2-428
540 x 250 x 130 mm
K2-429
540 x 250 x 180 mm

WIRE BASE



K2-440
545 x 255 x 30 mm

DIVIDERS



K2-425
540 x 250 x 130 mm
K2-426
540 x 250 x 180 mm

ALUMINIUM BASKET (with lid)



K3-1119
245 x 130 x 55 mm

ALUMINIUM BASKET (with lid)



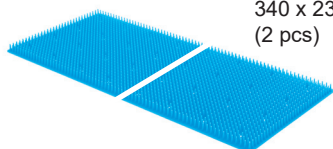
K3-1120
245 x 130 x 70 mm

ALUMINIUM BASKET (with lid)



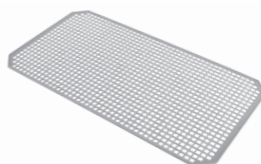
K3-1121
245 x 130 x 105 mm

SILICONE MAT



K2-522
340 x 230 mm
(2 pcs)

SILICONE MESH MAT



K2-536
658 x 247 mm

SILICONE HANDLE



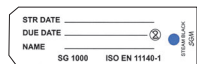
K2-710 ■
K2-711 ■
K2-712 ■
K2-713 ■
K2-714 ■
K2-715 ■

IDENTIFICATION LABELS (aluminium)



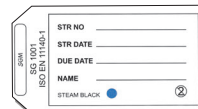
K2-700 ■
K2-701 ■
K2-702 ■
K2-703 ■
K2-704 ■
K2-705 ■

LABELS (paper)



K2-673
100 pcs. With indicator.
For small size and special containers

LABELS (paper)



K2-672
100 pcs. With indicator.
For full and Half size containers

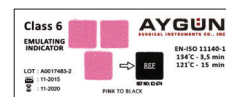
(-)

AUTO LOCK MECHANISM



K1-900
(2 Pcs)

EMULATING INDICATOR CARD (class 6)



K2-674
Paper 250 Pcs.



SECURITY SEAL (blue)
K2-663
100 pcs. with indicator.
made of plastic



SECURITY SEAL (blue)
K2-664
100 pcs. made of plastic



SECURITY SEAL (blue)
K2-661
100 pcs. with number.
made of plastic



SECURITY SEAL (red)
K2-662
100 pcs. with indicator.
made of plastic



SECURITY SEAL (red)
K2-660
100 pcs. made of plastic



SECURITY SEAL (red)
K2-665
100 pcs. with number.
made of plastic



DISPOSAL STAMP
K2-717
40 x 35 x 9 mm
Requested number or letter must be informed during the order.



LABEL HOLDER
K2-716
50 x 35 x 13 mm
Holder for identification labels

(-)