

STERILE CONTAINER SYSTEMS B3 MODEL



1/1 FULL SIZE



3/4 QUARTER SIZE



1/2 HALF SIZE



EXTRA LARGE SIZE



EXTRA LONG SIZE

Aygün B3 model sterilization container systems are designed to provide different filtering mechanisms in a single sterilization container according to user preference. Without buying a new lid, the users are able to change the filtering system on the lid. Aygün B3 model sterilization container systems can be used with 3 different filtering mechanisms.

PTFE system: This filtering mechanism is used with 2000 cycles PTFE Teflon Filter which can be changed by the user easily like in standard model filter-based sterilization containers. The filter used in this system is provided only by Aygün which is placed in a cassette.

Valve system: Valve system is modernized new model of Aygün Bio-Barrier systems and has the same running principal. This system works with mechanic valve with positive and negative pressure occurred during sterilization in autoclave and can be used minimum 5000 cycles.

Bio-Stop system: The Bio-Stop system is a flow inhibition system based on a principle discovered by Louis Pasteur. With a separation efficiency of 99.99 %, it offers significantly better protection against microbes and particles. This system can be used minimum 5000 cycles.

Aygün B3 model sterilization container systems are manufactured as five different length, width and height. All models and sizes have specific baskets and accessories which can be viewed in following parts. Modular auto lock mechanism (thermo lock) promising sterility assurance and indicator window providing visibility of the indicator card result by visual control without opening the lid are also available for this sterilization container model.



STERILE CONTAINER SYSTEMS



B₃ Carrier Container System

PTFE \rightleftarrows Valve \rightleftarrows Biostop

» 1/2 Half Size

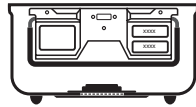
1/2 BOX (B³ barrier model)



with K2-482 wire base.

outside dimension

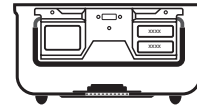
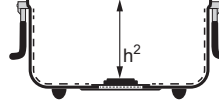
L: 310 mm



W: 272 mm

inside dimension

L: 253 mm



W: 258 mm



Specifications		PTFE	VALVE	BIOSTOP	BIOSTOP Aluminium
height					
h 110 mm		K8-600P	K8-600V	K8-600B	K8-600BA
h ² 63 mm					
h 130 mm		K8-601P	K8-601V	K8-601B	K8-601BA
h ² 81 mm					
h 150 mm		K8-602P	K8-602V	K8-602B	K8-602BA
h ² 101 mm					
h 200 mm		K8-603P	K8-603V	K8-603B	K8-603BA
h ² 153 mm					
h 250 mm		K8-604P	K8-604V	K8-604B	K8-604BA
h ² 199 mm					

PTFE pps
code **K1-970**

weight: 151 g

VALVE pps
code **K1-980**

weight: 163 g

BIOSTOP pps
code **K1-990**

weight: 281 g

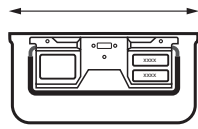
BIOSTOP aluminium
code **K1-990A**

weight: 434 g

1/2 BOX (non perforated)



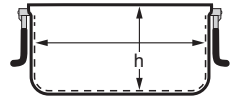
outside dimension



outside dimension

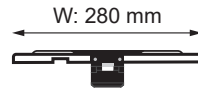
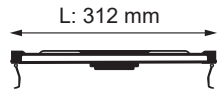


inside dimension



code	outside dimension	inside dimension	weight
K6-605	310 x 272 h:100 mm	253 x 258 h:94 mm	1267 g
K6-606	310 x 272 h:116 mm	253 x 258 h:110 mm	1315 g
K6-607	310 x 272 h:138 mm	253 x 258 h:132 mm	1427 g
K6-608	310 x 272 h:190 mm	253 x 258 h:184 mm	1660 g
K6-609	310 x 272 h:235 mm	253 x 258 h:229 mm	1940 g

LID (B³ barrier model)



color	PTFE	VALVE	BIOSTOP
	K8-630P	K8-630V	K8-630B
	K8-631P	K8-631V	K8-631B
	K8-632P	K8-632V	K8-632B
	K8-633P	K8-633V	K8-633B
	K8-634P	K8-634V	K8-634B
	K8-635P	K8-635V	K8-635B
	weight 835 g	weight 847 g	weight 965 g

BIOSTOP Aluminium
K8-630BA
K8-631BA
K8-632BA
K8-633BA
K8-634BA
K8-635BA
weight 1255 g



PTFE pps
code **K1-970**

weight: 151 g

VALVE pps
code **K1-980**

weight: 163 g

BIOSTOP pps
code **K1-990**

weight: 281 g

BIOSTOP aluminium
code **K1-990A**

weight: 434 g

SAFETY LIDS



code	color	weight
K6-700		775 g
K6-701		
K6-702		
K6-703		
K6-704		
K6-705		

Dimension: 317 x 285 mm

STANDARD MODEL 29

BIO-BARRIER MODEL 63

Polymer's PPSU Lids 97

WINDOW MODEL 119

B³ Barrier MODEL 139

PLASMA MODEL 173

A1 MODEL 185

Dental, Mini, Special 205

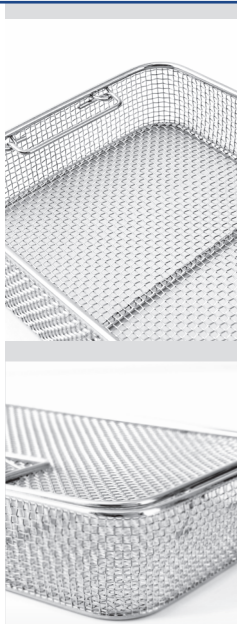
BASKETS 223

Autolock Mechanism Emulating Indicator 243

ACCESSORIES 251

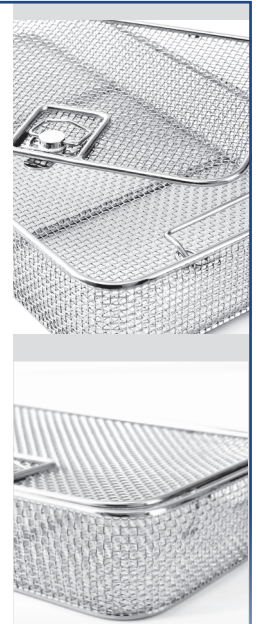
BASKET MADE FROM STAINLESS STEEL WIRE MESH

WIRE BASKET



code	outside dimension
K2-490	246 x 246 x h:30 mm
K2-491	246 x 246 x h:50 mm
K2-492	246 x 246 x h:70 mm
K2-493	246 x 246 x h:100 mm

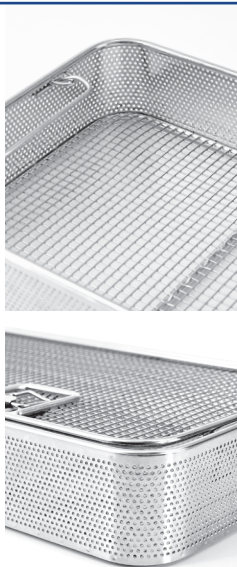
WIRE BASKET WITH LID



code	outside dimension
K3-1040	246 x 246 h:35 mm
K3-1041	246 x 246 h:55 mm
K3-1042	246 x 246 h:75 mm
K3-1043	246 x 246 h:105 mm
K3-1045	ONLY LID, for baskets

WIRE BASKET WITH PERFORATED METAL PLATE

WIRE BASKET



code	outside dimension
K2-491 P	246 x 246 x h:50 mm
K2-492 P	246 x 246 x h:70 mm
K2-493 P	246 x 246 x h:100 mm

WIRE BASKET WITH LID



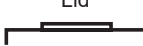


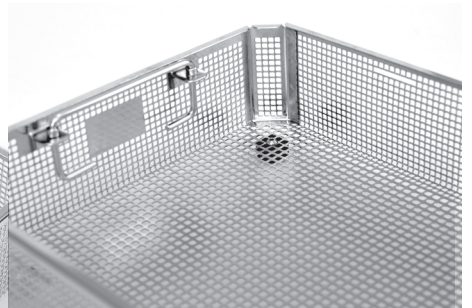
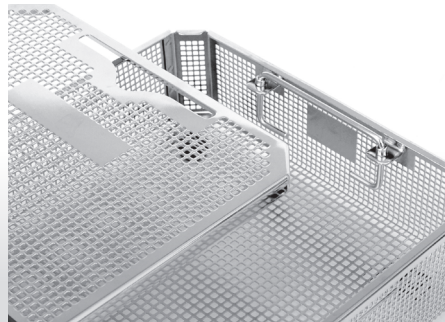
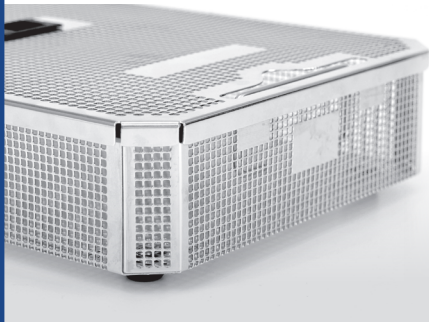
code	outside dimension
K3-1041 P	246 x 246 x h:55 mm
K3-1042 P	246 x 246 x h:75 mm
K3-1043 P	246 x 246 x h:105 mm
K3-1045 P	ONLY LID, for baskets

BASKET MADE FROM STAINLESS STEEL SHEET

BASKET (with stand)



	code	outside dimension
Box and Lid 	K3-732	250 x 259 h:44 mm
	K3-733	250 x 259 h:64 mm
	K3-734	250 x 259 h:84 mm
	K3-735	250 x 259 h:114 mm
Box 	K3-752	244 x 253 h:40 mm
	K3-753	244 x 253 h:60 mm
	K3-754	244 x 253 h:80 mm
	K3-755	244 x 253 h:110 mm
Lid 	K3-763	ONLY LID, for baskets



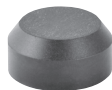
The baskets which are without lid and less than 44 mm in height do not include the handles while the ones with lid include the handles.

STAND



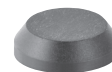
code	height
K3-767	20 mm

STAND



code	height
K3-768	10 mm

STAND



code	height
K3-766	5 mm

IDENTIFICATION (aluminium)

LABEL HOLDER



code	color
K2-560	Red
K2-561	Blue
K2-562	Green
K2-563	Yellow
K2-564	Grey
K2-565	Black

LABELS



code	color
K2-570	Red
K2-571	Blue
K2-572	Green
K2-573	Yellow
K2-574	Grey
K2-575	Black

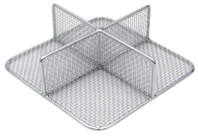
Coloured identification labels
Engraved to your specification



Grey coloured recommended for use in Sterrad.
Color fading By effect of Hydrogen Peroxide Gas Plasma on other colors.

STANDARD MODEL	29
BIO-BARRIER MODEL	63
Polymer's PPSU Lids	97
WINDOW MODEL	119
B ³ Barrier MODEL	139
PLASMA MODEL	173
A1 MODEL	185
Dental, Mini, Special	205
BASKETS	223
Autolock Mechanism Emulating Indicator	243
ACCESSORIES	251

DIVIDERS



K2-483
255 x 245 x 130 mm
K2-484
255 x 245 x 180 mm

WIRE BASE



K2-482
255 x 255 x 30 mm

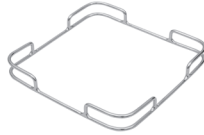
(-)

RACK (for kerrison)



K3-1094
220 x 250 x 160 mm
• Holds 10 kerrison punches
• Fits into a 1/2 and 1/1 size
• 20 cm deep container
• Wire basket 1/2 50 mm
• Wire basket 1/1 50 mm
• Container 1/2 200 mm
• Container 1/1 200 mm

DRAPE RETAINER



K3-481
255 x 255 x 30 mm

DRAPE RETAINER



K2-480
255 x 255 mm

ALUMINIUM BASKET (with lid)



K3-1119
245 x 130 x 55 mm

ALUMINIUM BASKET (with lid)



K3-1120
245 x 130 x 70 mm

ALUMINIUM BASKET (with lid)



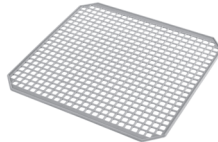
K3-1121
245 x 130 x 105 mm

SILICONE MAT



K2-521
250 x 235 mm

SILICONE MESH MAT



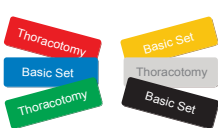
K2-530
250 x 240 mm

SILICONE HANDLE



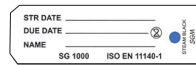
K2-710
K2-711
K2-712
K2-713
K2-714
K2-715

IDENTIFICATION LABELS (aluminium)



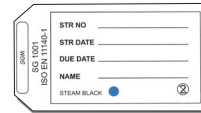
K2-700
K2-701
K2-702
K2-703
K2-704
K2-705

LABELS (paper)



K2-673
100 pcs. With indicator.
For small size and special containers

LABELS (paper)



K2-672
100 pcs. With indicator.
For full and Half size containers

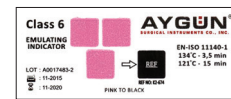
(-)

AUTO LOCK MECHANISM



K1-900
(2 Pcs)

EMULATING INDICATOR CARD (class 6)



K2-674
Paper 250 Pcs.



SECURITY SEAL (blue)
K2-663
100 pcs. with indicator.
made of plastic



SECURITY SEAL (blue)
K2-664
100 pcs. made of plastic



SECURITY SEAL (blue)
K2-661
100 pcs. with number.
made of plastic



SECURITY SEAL (red)
K2-662
100 pcs. with indicator.
made of plastic



SECURITY SEAL (red)
K2-660
100 pcs. made of plastic



SECURITY SEAL (red)
K2-665
100 pcs. with number.
made of plastic



DISPOSAL STAMP
K2-717
40 x 35 x 9 mm
Requested number or letter must be informed during the order.



LABEL HOLDER
K2-716
50 x 35 x 13 mm
Holder for identification labels

(-)