

STERILE CONTAINER SYSTEMS B3 MODEL



1/1 FULL SIZE



3/4 QUARTER SIZE



1/2 HALF SIZE



EXTRA LARGE SIZE



EXTRA LONG SIZE

Aygün B3 model sterilization container systems are designed to provide different filtering mechanisms in a single sterilization container according to user preference. Without buying a new lid, the users are able to change the filtering system on the lid. Aygün B3 model sterilization container systems can be used with 3 different filtering mechanisms.

PTFE system: This filtering mechanism is used with 2000 cycles PTFE Teflon Filter which can be changed by the user easily like in standard model filter-based sterilization containers. The filter used in this system is provided only by Aygün which is placed in a cassette.

Valve system: Valve system is modernized new model of Aygün Bio-Barrier systems and has the same running principal. This system works with mechanic valve with positive and negative pressure occurred during sterilization in autoclave and can be used minimum 5000 cycles.

Bio-Stop system: The Bio-Stop system is a flow inhibition system based on a principle discovered by Louis Pasteur. With a separation efficiency of 99.99 %, it offers significantly better protection against microbes and particles. This system can be used minimum 5000 cycles.

Aygün B3 model sterilization container systems are manufactured as five different length, width and height. All models and sizes have specific baskets and accessories which can be viewed in following parts. Modular auto lock mechanism (thermo lock) promising sterility assurance and indicator window providing visibility of the indicator card result by visual control without opening the lid are also available for this sterilization container model.



STERILE CONTAINER SYSTEMS



B₃ Carrier Container System

PTFE  Valve  Biostop

» 1/1 Full Size

1/1 BOX (B³ barrier model)



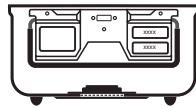
with K2-440 wire base.

outside dimension

L: 600 mm



W: 272 mm

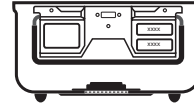


inside dimension

L: 543 mm



W: 258 mm



BIOSTOP
Aluminium



Specifications		PTFE	VALVE	BIOSTOP	BIOSTOP Aluminium
height					
h 110 mm		K8-100P	K8-100V	K8-100B	K8-100BA
h² 63 mm					
h 130 mm		K8-101P	K8-101V	K8-101B	K8-101BA
h² 81 mm					
h 150 mm		K8-102P	K8-102V	K8-102B	K8-102BA
h² 101 mm					
h 200 mm		K8-103P	K8-103V	K8-103B	K8-103BA
h² 153 mm					
h 250 mm		K8-104P	K8-104V	K8-104B	K8-104BA
h² 199 mm					

PTFE pps
code **K1-970**

weight: 151 g

VALVE pps
code **K1-980**

weight: 163 g

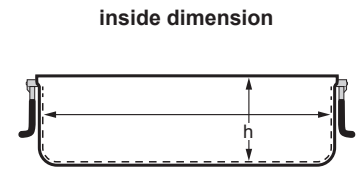
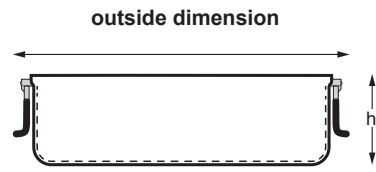
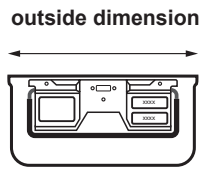
BIOSTOP pps
code **K1-990**

weight: 281 g

BIOSTOP aluminium
code **K1-990A**

weight: 434 g

1/1 BOX (non perforated)



code	outside dimension	inside dimension	weight
K6-105	600 x 272 h:100 mm	543 x 258 h:94 mm	1900 g
K6-106	600 x 272 h:116 mm	543 x 258 h:110 mm	2096 g
K6-107	600 x 272 h:138 mm	543 x 258 h:132 mm	2205 g
K6-108	600 x 272 h:190 mm	543 x 258 h:184 mm	2648 g
K6-109	600 x 272 h:235 mm	543 x 258 h:229 mm	3040 g

LID (B³ Barrier model)



color	PTFE	VALVE	BIOSTOP
	K8-120P	K8-120V	K8-120B
	K8-121P	K8-121V	K8-121B
	K8-122P	K8-122V	K8-122B
	K8-123P	K8-123V	K8-123B
	K8-124P	K8-124V	K8-124B
	K8-125P	K8-125V	K8-125B
	weight 1566 g	weight 1590 g	weight 1826 g

BIOSTOP Aluminium
K8-120BA
K8-121BA
K8-122BA
K8-123BA
K8-124BA
K8-125BA
weight 2357 g



PTFE pps
code **K1-970**

weight: 151 g

VALVE pps
code **K1-980**

weight: 163 g

BIOSTOP pps
code **K1-990**

weight: 281 g

BIOSTOP aluminium
code **K1-990A**

weight: 434 g

SAFETY LIDS



code	color	weight
K6-230		988 g
K6-231		
K6-232		
K6-233		
K6-234		
K6-235		

Dimension: 606 x 288 mm

STANDARD MODEL 29

BIO-BARRIER MODEL 63

Polymer's PPSU Lids 97

WINDOW MODEL 119

B³ Barrier MODEL 139

PLASMA MODEL 173

A1 MODEL 185

Dental, Mini, Special 205

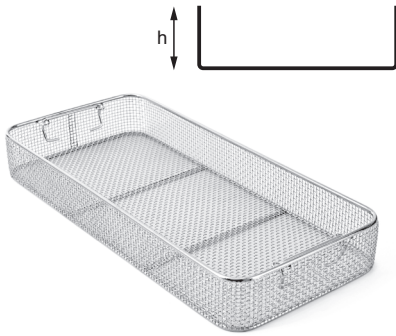
BASKETS 223

Autolock Mechanism Emulating Indicator 243

ACCESSORIES 251

BASKET MADE FROM STAINLESS STEEL WIRE MESH

WIRE BASKET



code	outside dimension
K2-460	540 x 245 h:30 mm
K2-461	540 x 245 h:50 mm
K2-462	540 x 245 h:70 mm
K2-463	540 x 245 h:100 mm
K2-450	480 x 245 h:30 mm
K2-451	480 x 245 h:50 mm
K2-452	480 x 245 h:70 mm
K2-453	480 x 245 h:100 mm



WIRE BASKET WITH LID

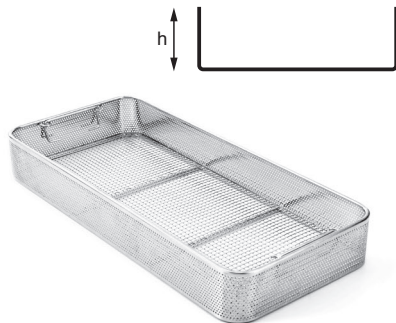


code	outside dimension
K3-1010	540 x 245 h:35 mm
K3-1011	540 x 245 h:55 mm
K3-1012	540 x 245 h:75 mm
K3-1013	540 x 245 h:105 mm
K3-1014	ONLY LID, for baskets
K3-1020	480 x 245 h:35 mm
K3-1021	480 x 245 h:55 mm
K3-1022	480 x 245 h:75 mm
K3-1023	480 x 245 h:105 mm
K3-1024	ONLY LID, for baskets

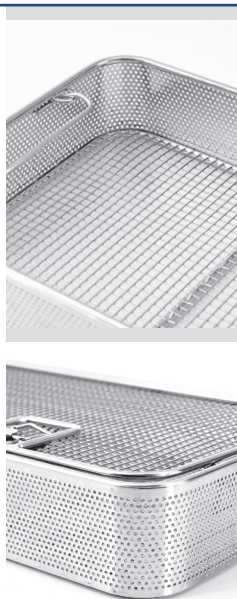


WIRE BASKET WITH PERFORATED METAL PLATE

WIRE BASKET



code	outside dimension
K2-461 P	540 x 245 h:50 mm
K2-462 P	540 x 245 h:70 mm
K2-463 P	540 x 245 h:100 mm
K2-451 P	480 x 245 h:50 mm
K2-452 P	480 x 245 h:70 mm
K2-453 P	480 x 245 h:100 mm



WIRE BASKET WITH LID



code	outside dimension
K3-1011 P	540 x 245 h:55 mm
K3-1012 P	540 x 245 h:75 mm
K3-1013 P	540 x 245 h:105 mm
K3-1014 P	ONLY LID, for baskets
K3-1021 P	480 x 245 h:55 mm
K3-1022 P	480 x 245 h:75 mm
K3-1023 P	480 x 245 h:105 mm
K3-1024 P	ONLY LID, for baskets

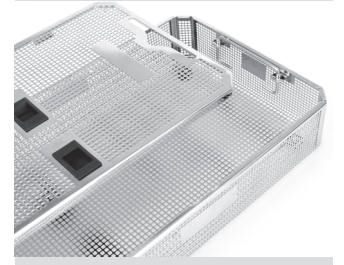


BASKET MADE FROM STAINLESS STEEL SHEET

BASKET (with stand)



	code	outside dimension
Box and Lid	K3-720	546 x 259 h:44 mm
	K3-721	546 x 259 h:64 mm
	K3-722	546 x 259 h:84 mm
	K3-723	546 x 259 h:114 mm
Box	K3-740	540 x 253 h:40 mm
	K3-741	540 x 253 h:60 mm
	K3-742	540 x 253 h:80 mm
	K3-743	540 x 253 h:110 mm
	K3-760	ONLY LID, for baskets
Lid		



BASKET (with stand)



	code	outside dimension
Box and Lid	K3-724	491 x 259 h:44 mm
	K3-725	491 x 259 h:64 mm
	K3-726	491 x 259 h:84 mm
	K3-727	491 x 259 h:114 mm
	K3-744	485 x 253 h:40 mm
Box	K3-745	485 x 253 h:60 mm
	K3-746	485 x 253 h:80 mm
	K3-747	485 x 253 h:110 mm
	K3-761	ONLY LID, for baskets
Lid		

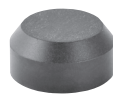
The baskets which are without lid and less than 44 mm in height do not include the handles while the ones with lid include the handles.

STAND



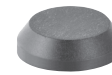
code	height
K3-767	20 mm

STAND



code	height
K3-768	10 mm

STAND



code	height
K3-766	5 mm

IDENTIFICATION (aluminium)

LABEL HOLDER



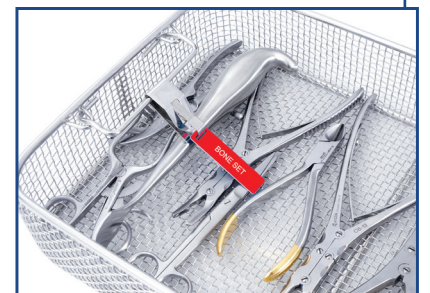
code	color
K2-560	Red
K2-561	Blue
K2-562	Green
K2-563	Yellow
K2-564	Grey
K2-565	Black

LABELS



code	color
K2-570	Red
K2-571	Blue
K2-572	Green
K2-573	Yellow
K2-574	Grey
K2-575	Black

Coloured identification labels
Engraved to your specification



Grey coloured recommended for use in Sterrad.
Color fading By effect of Hydrogen Peroxide Gas Plasma on other colors.

STANDARD MODEL

29

BIO-BARRIER MODEL

63

Polymer's PPSU Lids

97

WINDOW MODEL

119

B₃ barrier MODEL

139

PLASMA MODEL

173

A1 MODEL

185

Dental, Mini, Special

205

BASKETS

223

Autolock Mechanism Emulating Indicator

243

ACCESSORIES

251

DIVIDERS



K2-428
540 x 250 x 130 mm
K2-429
540 x 250 x 180 mm

WIRE BASE



K2-440
545 x 255 x 30 mm

DIVIDERS



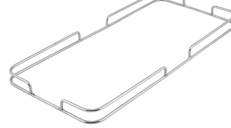
K2-425
540 x 250 x 130 mm
K2-426
540 x 250 x 180 mm

RACK (for endoscopy)



K3-1090
505 x 250 x 125 mm
• Holds 10 endoscopic instruments
• Fits into a 1/1 size 20 cm deep container
• Wire basket 1/1 50 mm
• Container 1/1 200 mm
• Silicone mat 520 x 230 mm

DRAPE RETAINER



K2-420
545 x 255 x 30 mm

DRAPE RETAINER



K2-400
545 x 255 mm

ALUMINIUM BASKET (with lid)



K3-1119
245 x 130 x 55 mm

ALUMINIUM BASKET (with lid)



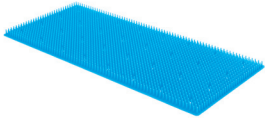
K3-1120
245 x 130 x 70 mm

ALUMINIUM BASKET (with lid)



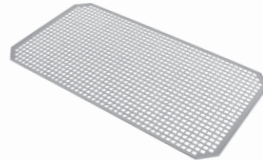
K3-1121
245 x 130 x 105 mm

SILICONE MAT



K2-526
520 x 230 mm
K2-528
475 x 230 mm

SILICONE MESH MAT



K2-531
485 x 250 mm
K2-533
534 x 247 mm

SILICONE HANDLE



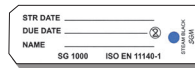
K2-710
K2-711
K2-712
K2-713
K2-714
K2-715

IDENTIFICATION LABELS (aluminium)



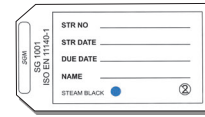
K2-700
K2-701
K2-702
K2-703
K2-704
K2-705

LABELS (paper)



K2-673
100 pcs. With indicator.
For small size and special containers

LABELS (paper)



K2-672
100 pcs. With indicator.
For full and Half size containers

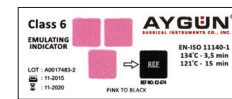
(-)

AUTO LOCK MECHANISM



K1-900
(2 Pcs)

EMULATING INDICATOR CARD (class 6)



K2-674
Paper 250 Pcs.



SECURITY SEAL (blue)
K2-663
100 pcs. with indicator.
made of plastic



SECURITY SEAL (blue)
K2-664
100 pcs. made of plastic



SECURITY SEAL (blue)
K2-661
100 pcs. with number.
made of plastic



SECURITY SEAL (red)
K2-662
100 pcs. with indicator.
made of plastic



SECURITY SEAL (red)
K2-660
100 pcs. made of plastic



SECURITY SEAL (red)
K2-665
100 pcs. with number.
made of plastic



DISPOSAL STAMP
K2-717
40 x 35 x 9 mm
Requested number or letter must be informed during the order.



LABEL HOLDER
K2-716
50 x 35 x 13 mm
Holder for identification labels

(-)